



OUR MISSION: To Serve EVERY Student
with Excellence as the Standard

ORGANIZATIONAL STRUCTURE

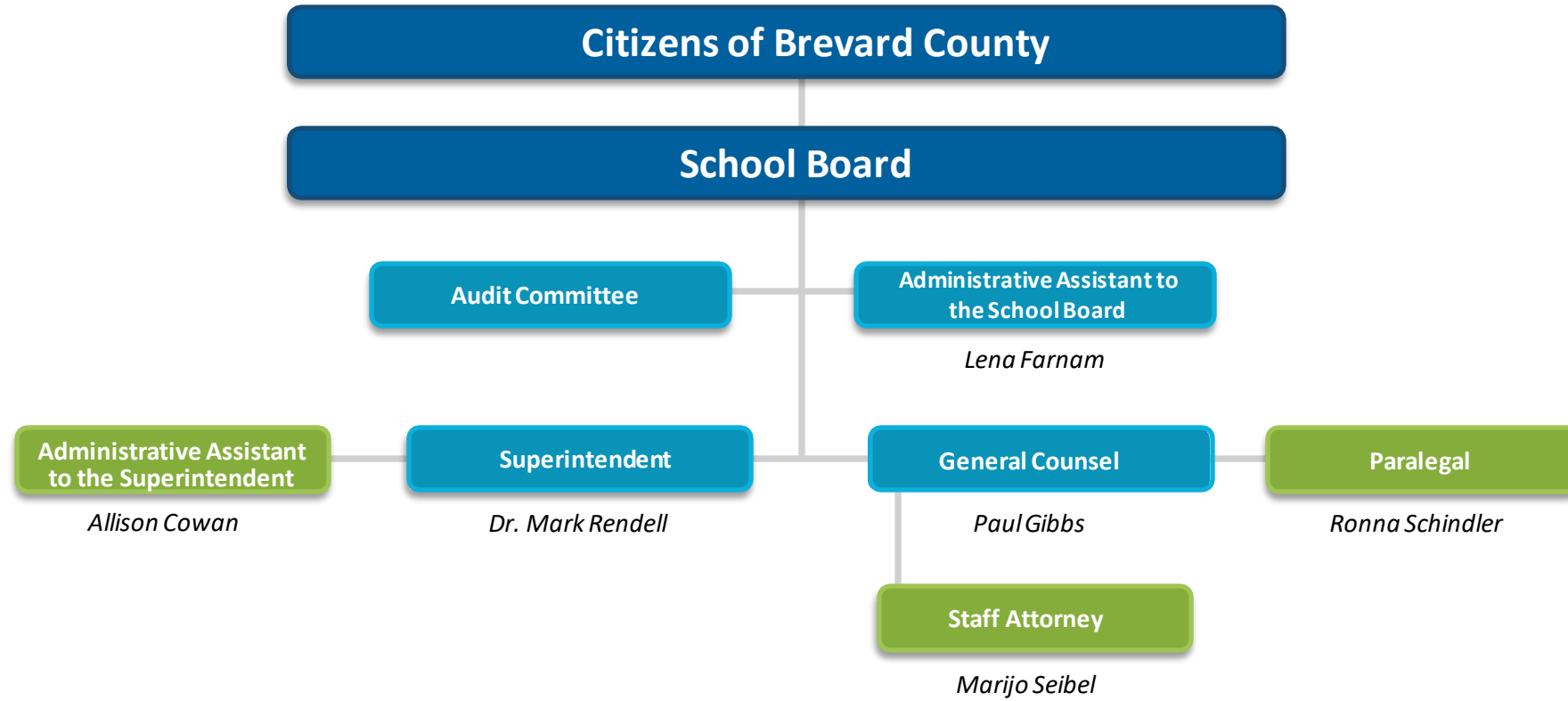


- Direct Level or Higher
- Direct Reporting Level
- Second Reporting Level



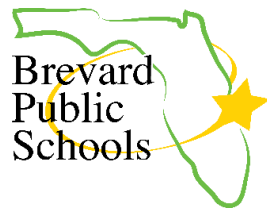
BOARD OFFICE

(9000)



- Direct Level or Higher
- Direct Reporting Level
- Second Reporting Level

SUPERINTENDENT'S OFFICE (9100)



Superintendent – Dr. Mark Rendell

Administrative Assistant to the Superintendent

Allison Cowan

District & School Security

Major Robert Cline

Chief Operating Officer

Rachad Wilson

Assistant Superintendent of Human Resources

Ryan Dufrain

Chief Financial Officer

Cynthia Lesinski

**Assistant Superintendent/
Chief Information Officer**

Russell Cheatham

**Deputy Superintendent/Assistant
Superintendent of Facilities
Services**

Susan Hann

**Chief Communications
Officer**

Russell Bruhn

Chief of Schools

James Rehmer

**Assistant Superintendent of
Curriculum & Instruction**

Tara Harris

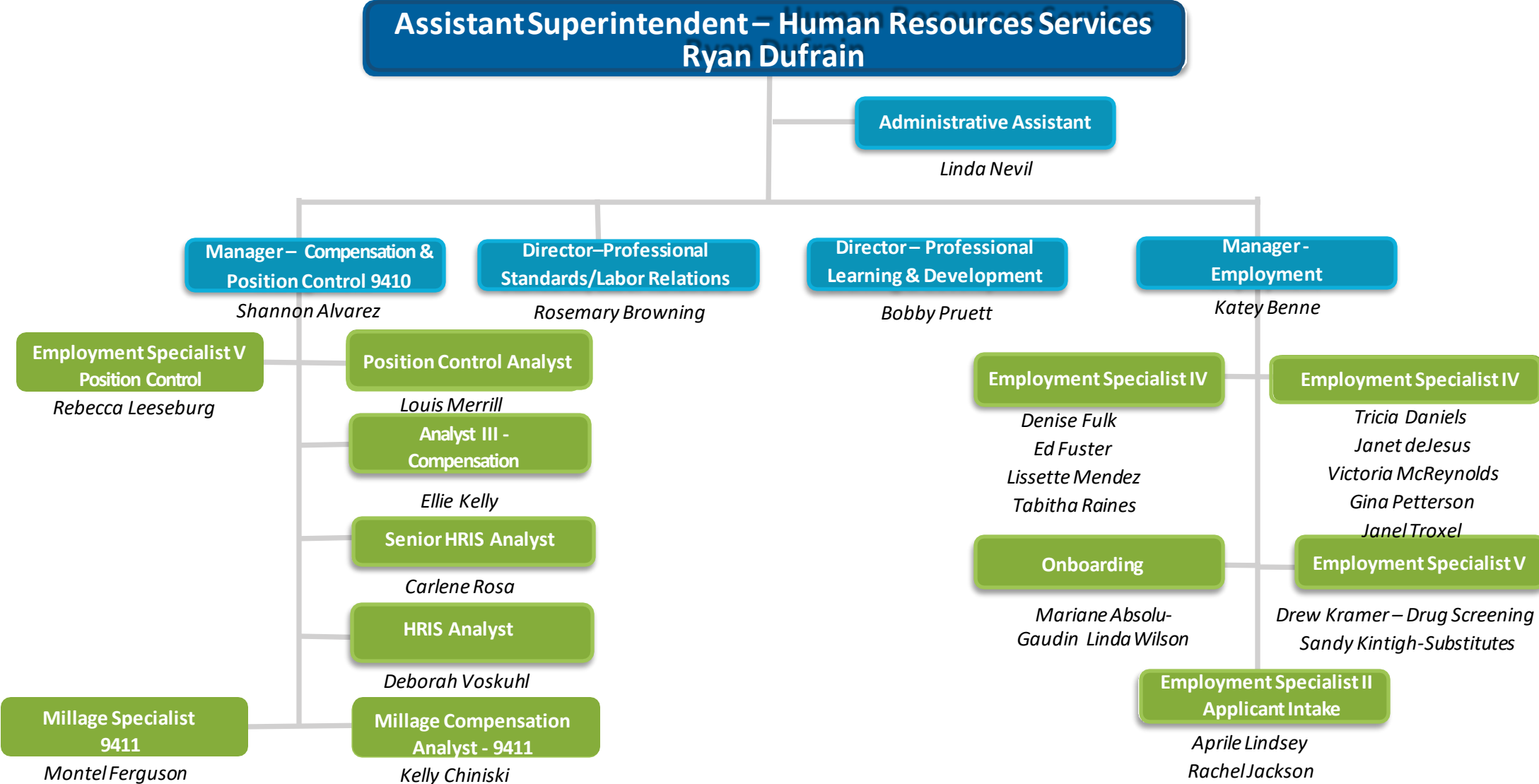
**Assistant Superintendent of
Student Services**

Pamela Dampier

- Direct Level or Higher
- Direct Reporting Level
- Second Reporting Level

HUMAN RESOURCES

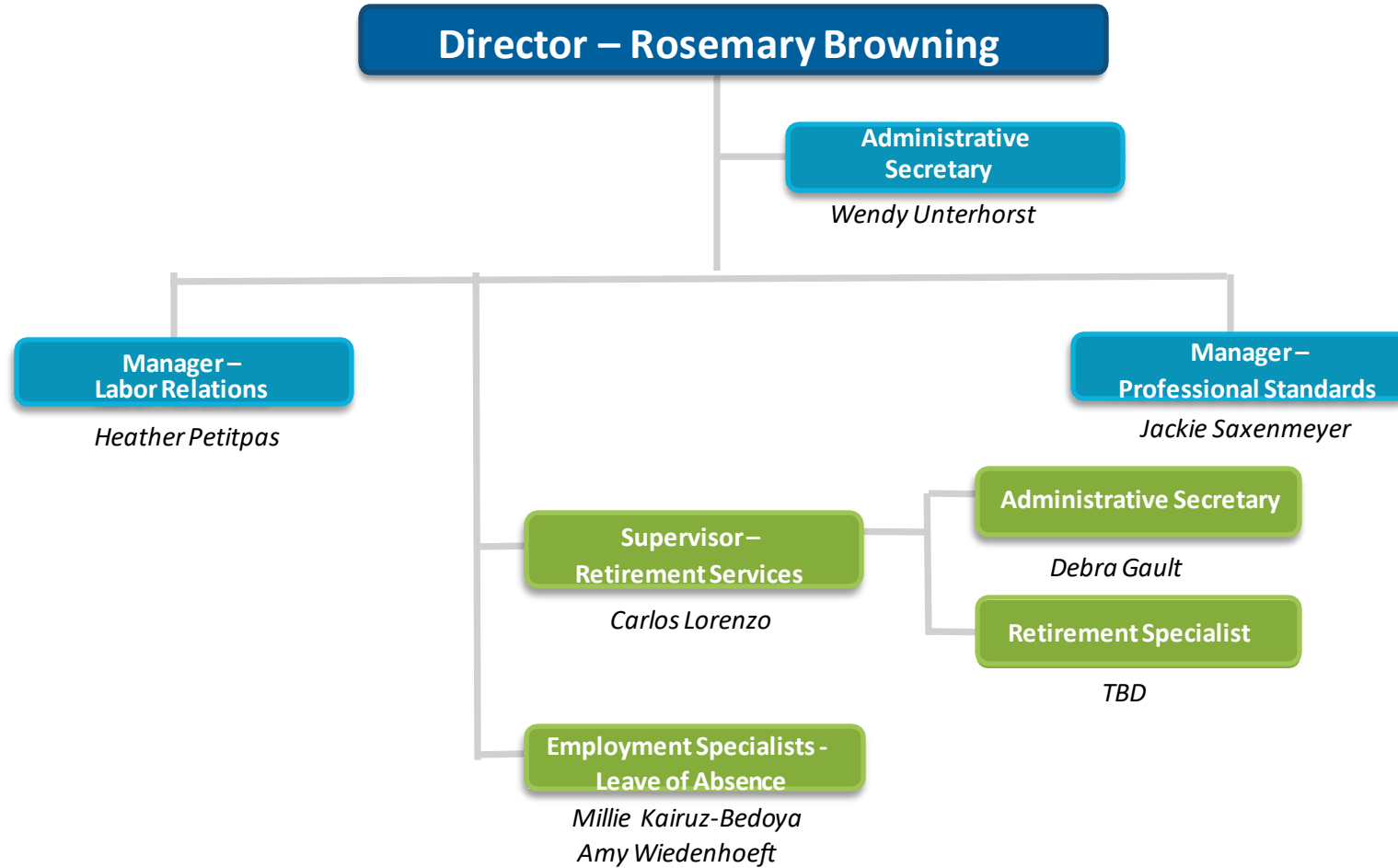
(9400)



- Direct Level or Higher
- Direct Reporting Level
- Second Reporting Level

HUMAN RESOURCES

Professional Standards & Labor Relations (9420)

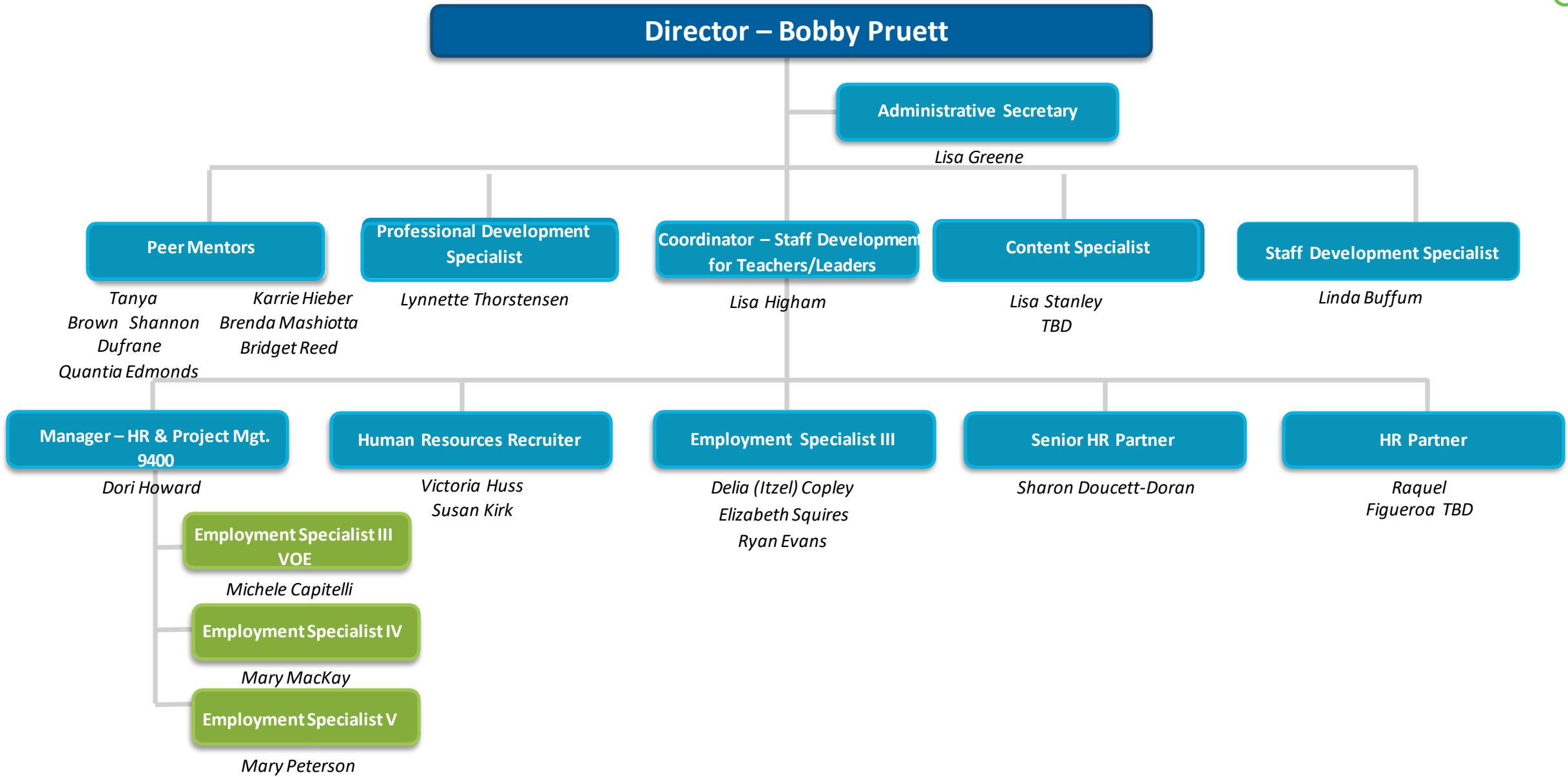


- Direct Level or Higher
- Direct Reporting Level
- Second Reporting Level



HUMAN RESOURCES

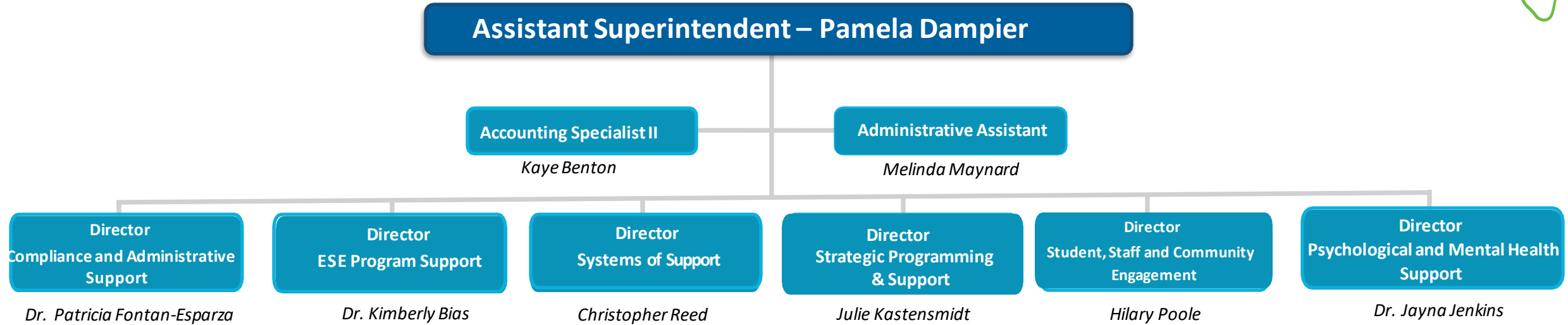
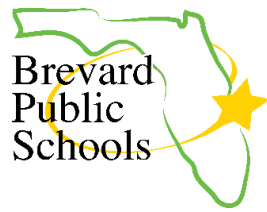
Professional Learning & Development (9485)



- Direct Level or Higher
- Direct Reporting Level
- Second Reporting Level

STUDENT SERVICES

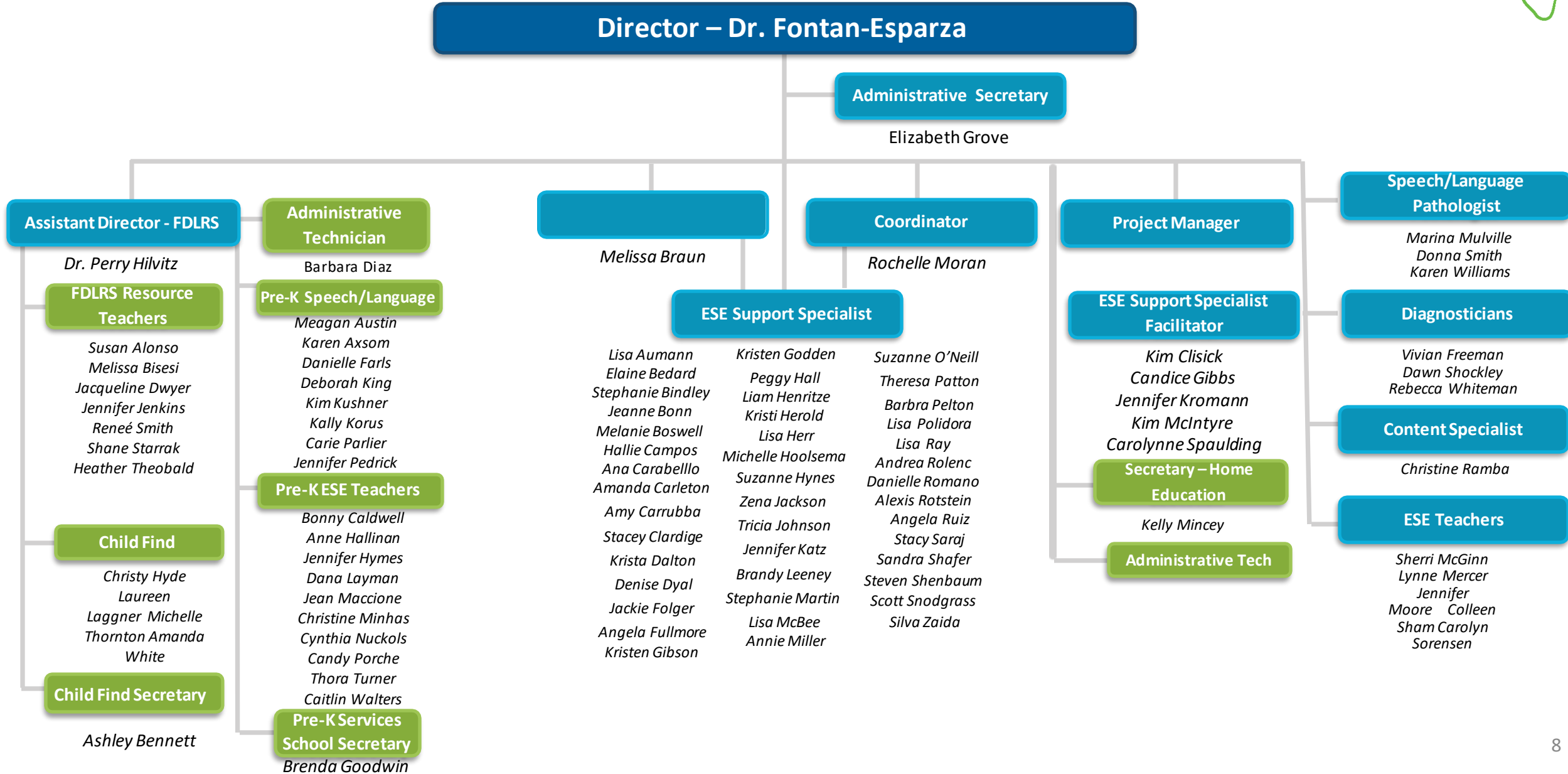
(9260)



- Direct Level or Higher
- Direct Reporting Level
- Second Reporting Level

STUDENT SERVICES

Compliance and Administrative Support (9290/9285/9815/1021)



- Direct Level or Higher
- Direct Reporting Level
- Second Reporting Level



STUDENT SERVICES

Program Support (9280/9816/1073/9221)

Director – Dr. Kimberly Bias

Accounting Specialist

Sue Falcioni

Administrative Secretary

Merion Sadowitz

Grant Coordinator-
ESOL- Title III

Anne Skinner

Itinerant Teachers

Sophia Ponton
Robin
Shaver Julia
Myriam Hernandez-Berry

Parent/Family

Rafael Vilchez
Angelina Hernandez

Assistant

Vacant

Grant Coordinator-
Project Access

Christina Yu

Content Specialist

Jeff Pruitt

Administrative
Secretary

Rebecca Harris

Medicaid

Cheryl Wratchford

CBA

Jesse Allgood
Holly Bell
Jennifer Clark
Mary Flynn
Leslie Hall
Angela Kenkel
Robin Minuse
Alex Strahle

SEDNET

Kelly Sarria

LATS

Tina Drummond
Priscilla Kershaw
Jennifer Mahovich
Juana Velie
Aubrey Garnett

Audiologists

Dr. Elyse Amigo
Dr. Krista Kello

Coordinator
Elementary Programs

Mallory White

Resource Teachers/
Content Specialists

Jill Minuse
Philip Garza
Alicia Street
Michelle Tucci-Udo
Liz Velez
Megan Davis
Jennifer Crabb
Lucy Ninko

ESE Teacher Support

Linda Wetzel
Vacant

Data Clerk

Gail Jackson

Itinerant Teachers

Adaptive PE
Keith Blackman
Jim Burrows
Gary Fleig
Scott Pedrick
Tina Stofflet
Mark Chalmers
Kyle Johnson

Speech-Language
Pathologist

Danielle Ryba

Teachers (VI)

Theresa Bradley
Ann Cowan
Jessica Smith
Stephanie Shaw
Vacant

Teachers (DHH)

Elizabeth Willis
Natasha Hunt
Laura McIntyre
Stacey Yount
Alexa Henery

Coordinator-
Secondary Programs

Dr. David O'Brien

Resource Teachers/
Content Specialists

Nicole Burks
Asa McKeown
Terry Matson
Dietrich Browne

Project Search
BLAST- 1073

Lyn Cline
Tammy Karr (SLP)
Veronica Marren
RuthAnn Thompson
Elisabeth Douberly
Bria Payne
Julie Brown-Daniels

- Direct Level or Higher
- Direct Reporting Level
- Second Reporting Level

STUDENT SERVICES

Psychological & Mental Health Services (7100)



Director – Dr. Jayna Jenkins

Coordinator

Dr. Chana Speir

Administrative Secretary

Ms. Donna Tabb

Mental Health

Mental Wellness
Pathways & Referrals

Youth Mental Health
First Aid

Threat Management
& Assessment

District Mental
Health Counselor

Crisis Response &
Recovery

Suicide Prevention
Suicide Risk Inquiry
Consultants

Psychological Services

School Psychologists

Social Work Services

Check & Connect SW

Foster Care

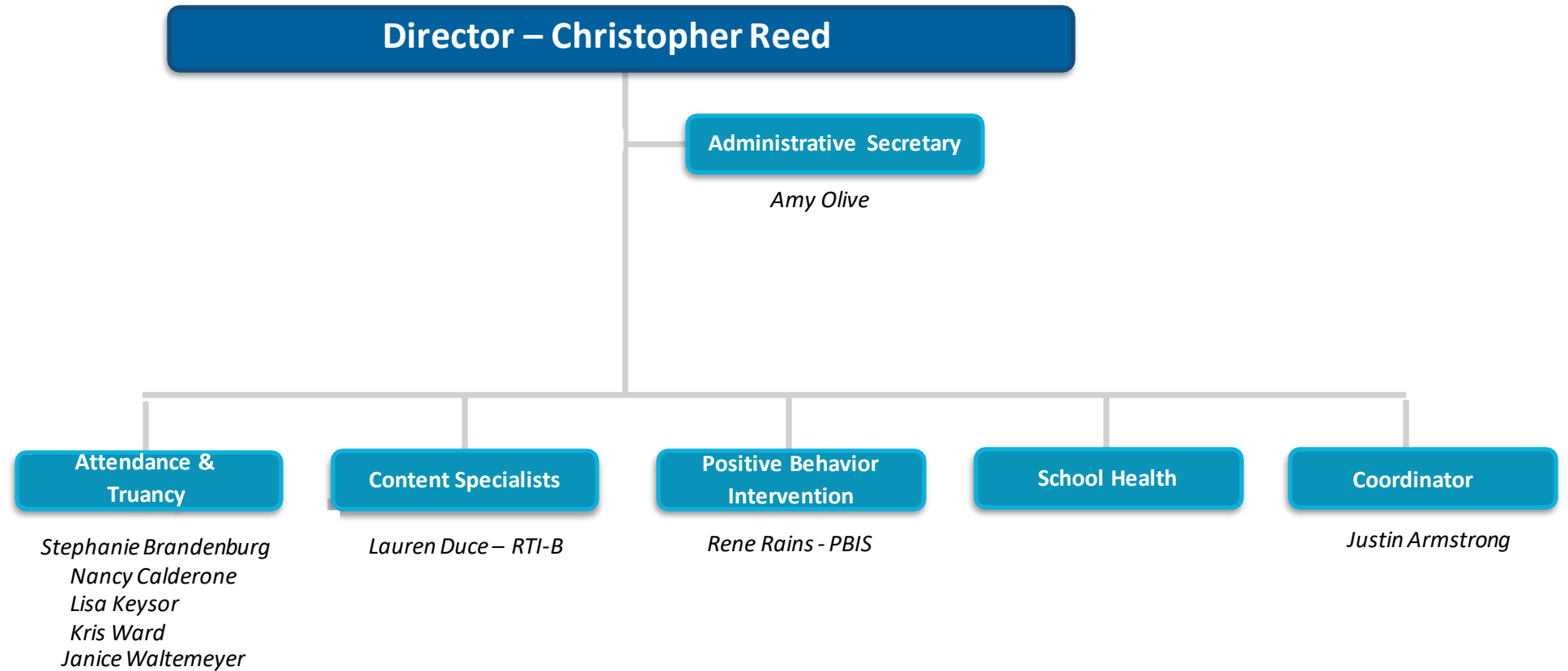
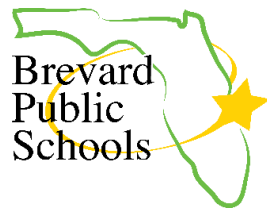
District Social Worker
Elem. & Secondary
Social Work Services

Substance Use/Abuse
Prevention

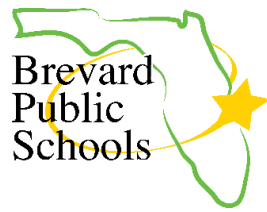
- Direct Level or Higher
- Direct Reporting Level
- Second Reporting Level

STUDENT SERVICES

Systems of Support (9295)

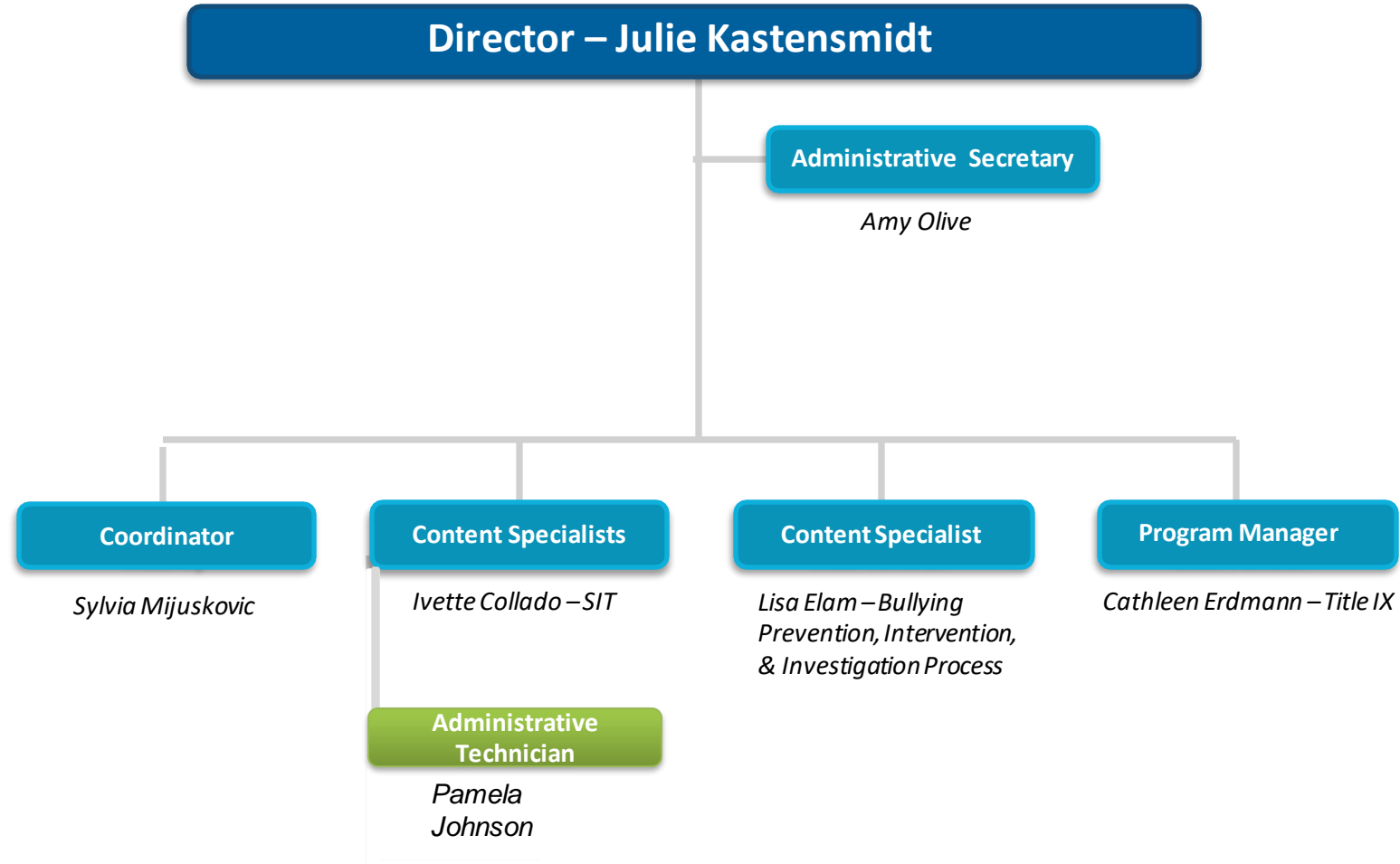


- Direct Level or Higher
- Direct Reporting Level
- Second Reporting Level



STUDENT SERVICES

Strategic Programming and Support (9264)



- Direct Level or Higher
- Direct Reporting Level
- Second Reporting Level

STUDENT SERVICES

Student, Parent, and Community Engagement (9263)



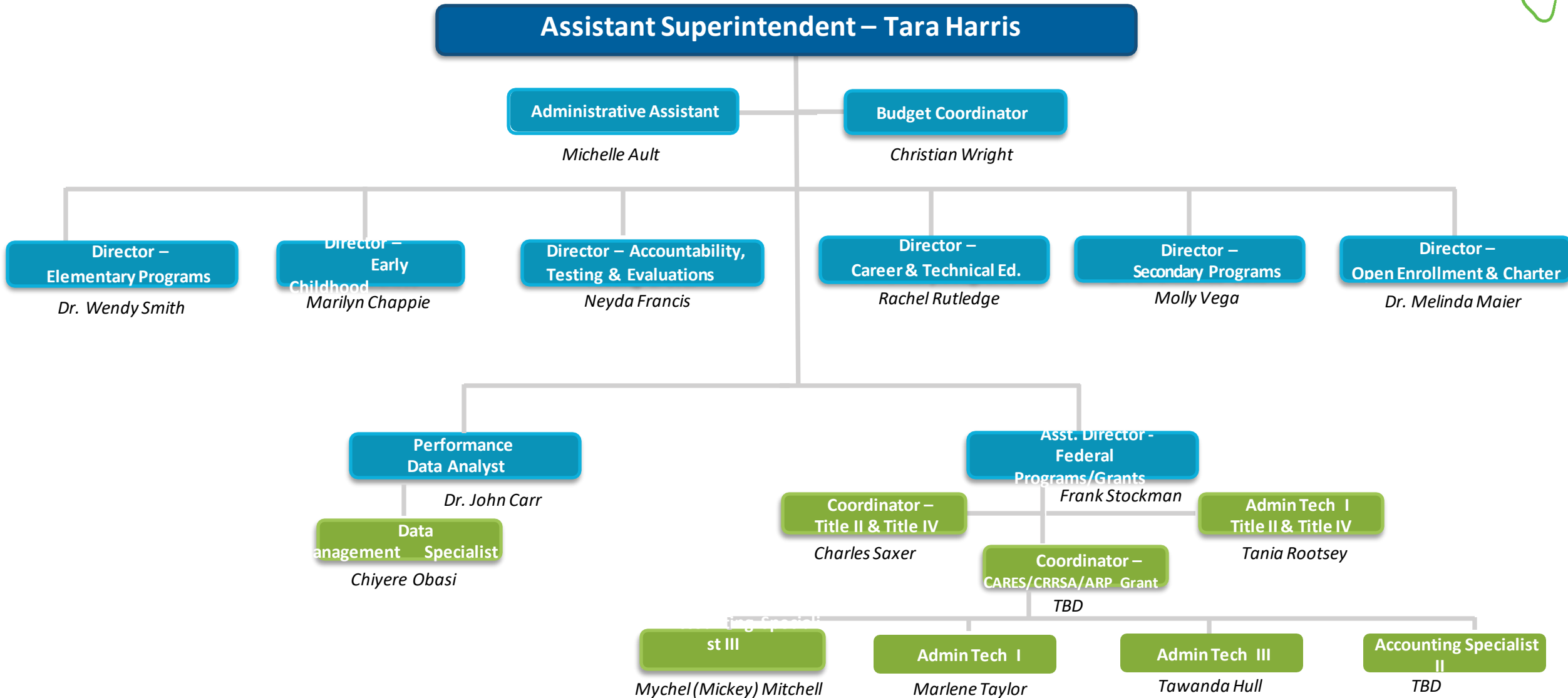
Director – Hilary Poole

Administrative Secretary

Donna Tabb

- Direct Level or Higher
- Direct Reporting Level
- Second Reporting Level

CURRICULUM & INSTRUCTION (9201)



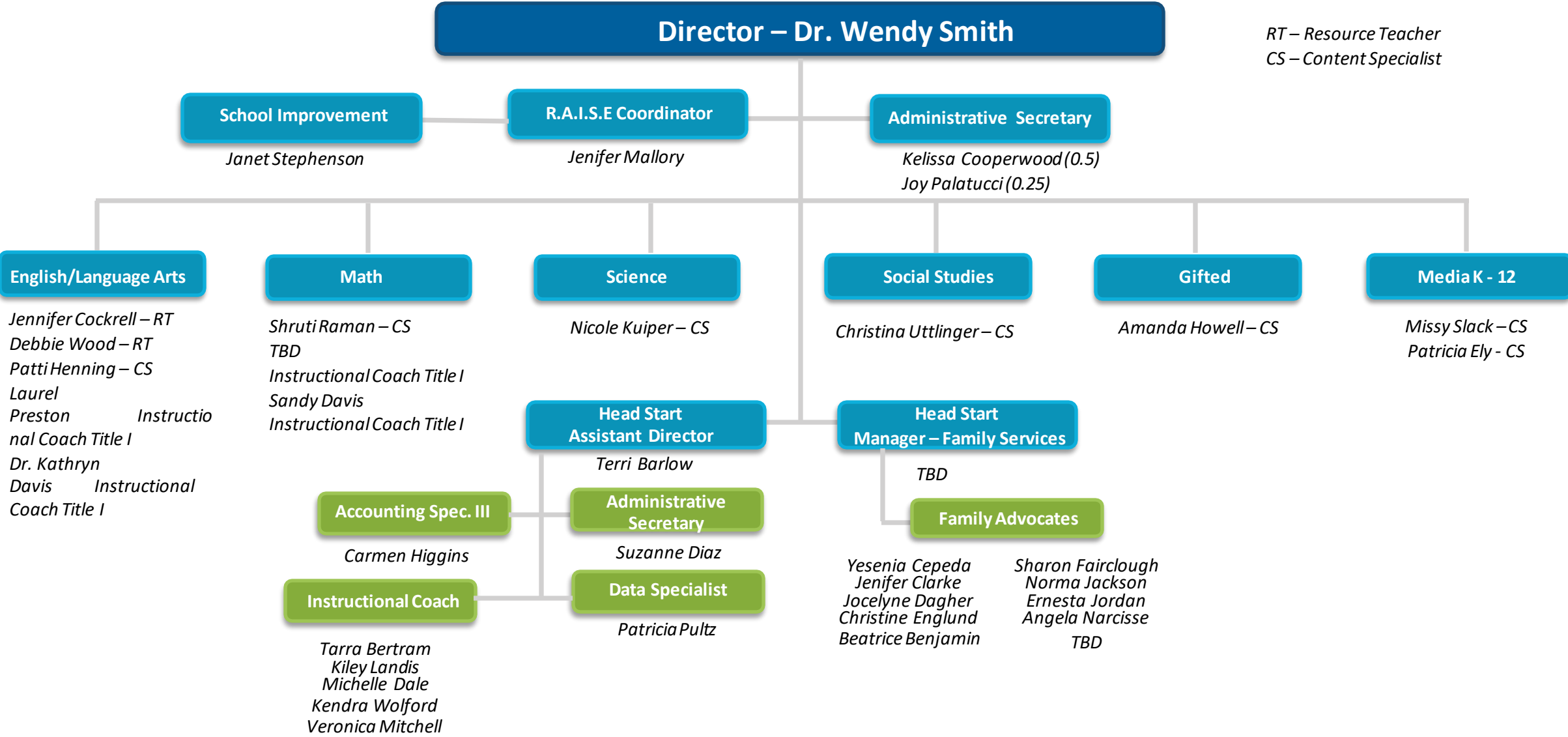
- Direct Level or Higher
- Direct Reporting Level
- Second Reporting Level

CURRICULUM & INSTRUCTION

Elementary Programs/Head Start (9210 & 9212&9215)



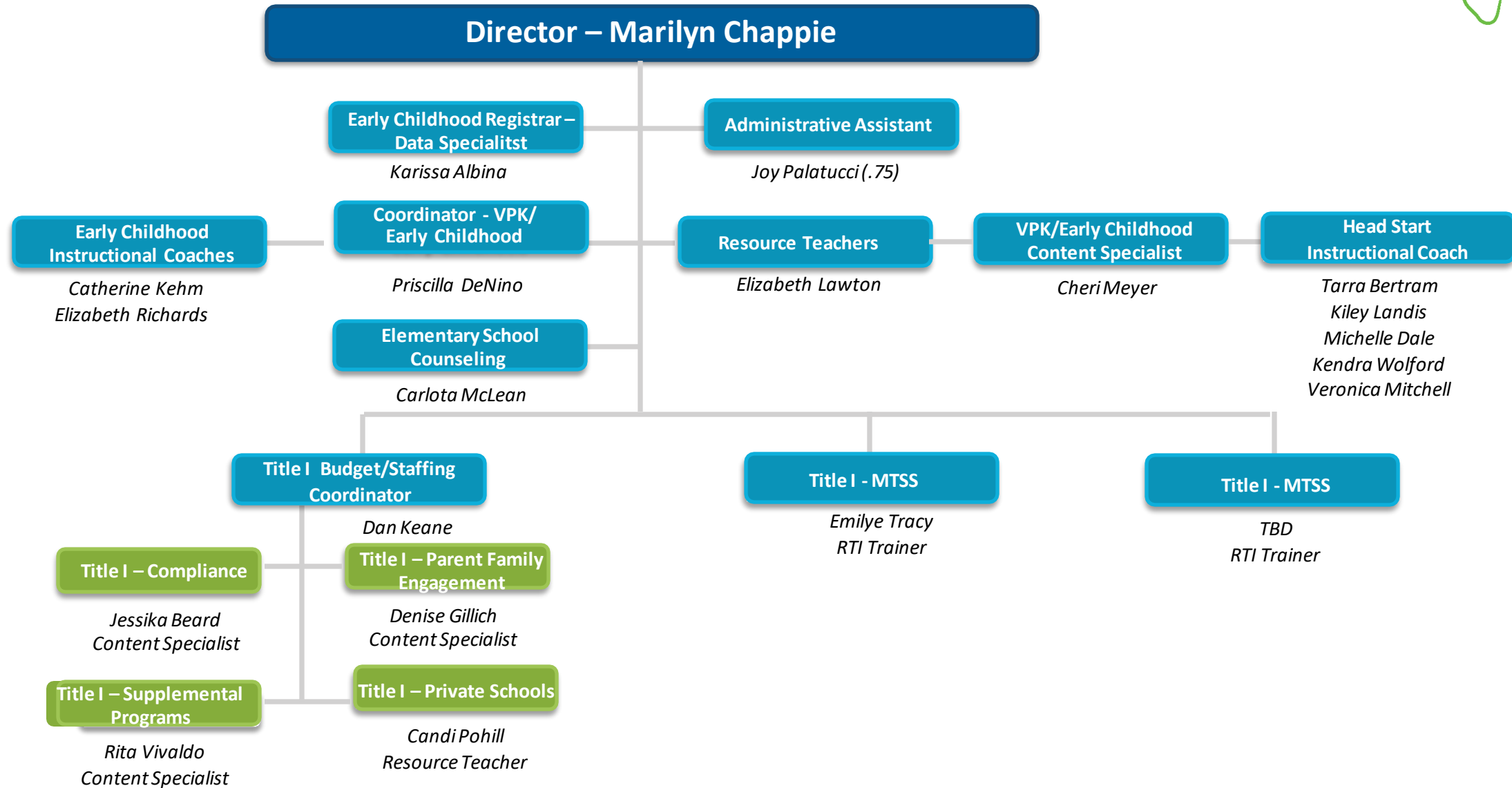
RT – Resource Teacher
CS – Content Specialist



- Direct Level or Higher
- Direct Reporting Level
- Second Reporting Level

CURRICULUM & INSTRUCTION

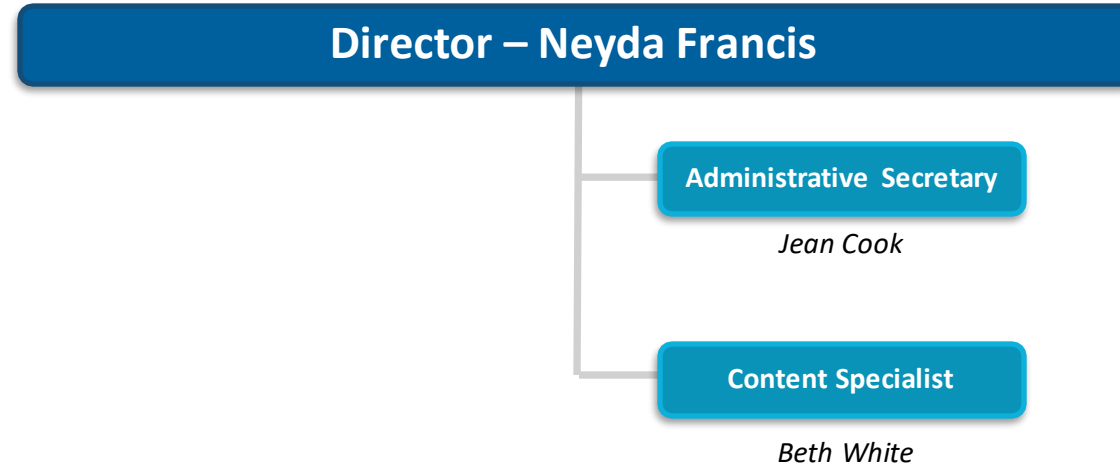
Early Childhood/Title I (9210 & 9212)



- Direct Level or Higher
- Direct Reporting Level
- Second Reporting Level

CURRICULUM & INSTRUCTION

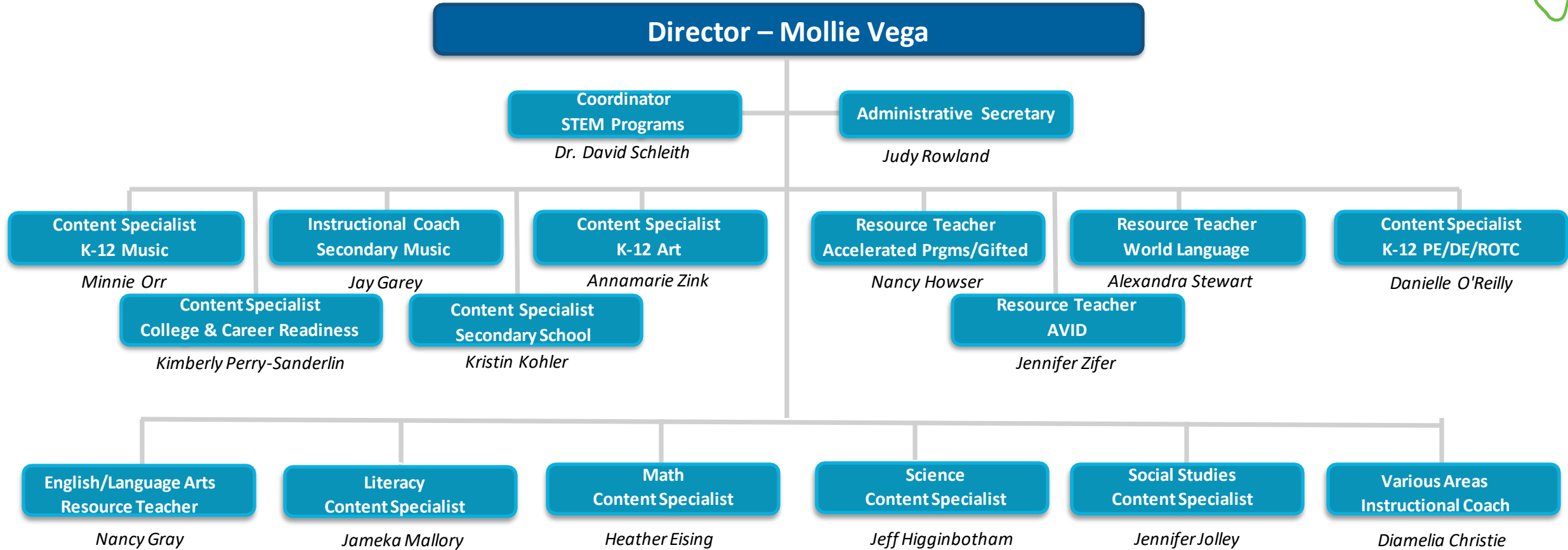
Accountability, Testing & Evaluation
(9250)



- Direct Level or Higher
- Direct Reporting Level
- Second Reporting Level

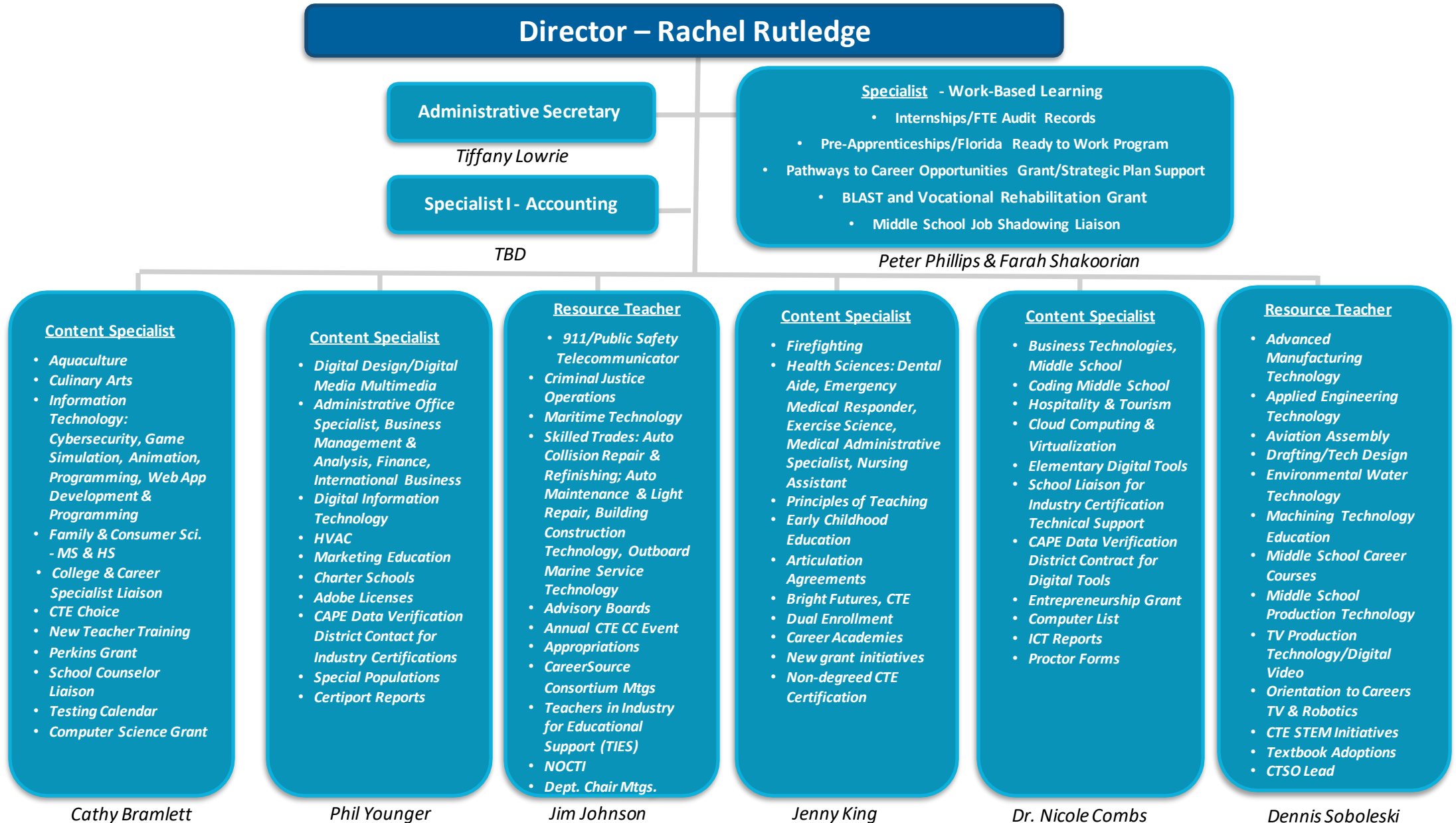
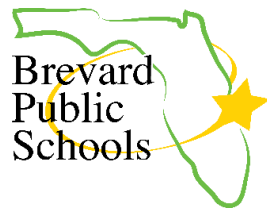
CURRICULUM & INSTRUCTION

(9231)



CURRICULUM & INSTRUCTION

Career & Technical Education (9270)

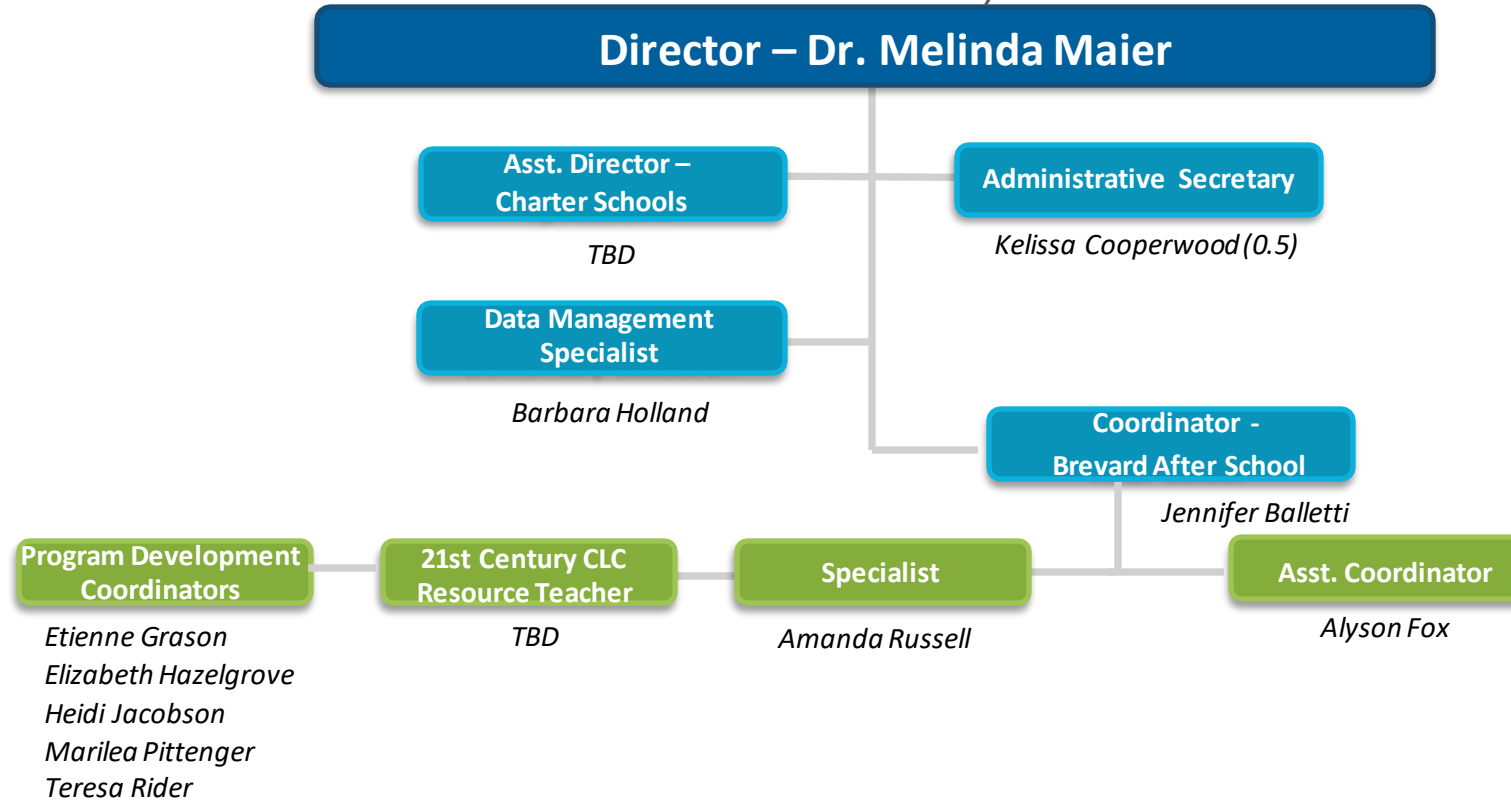


- Direct Level or Higher
- Direct Reporting Level
- Second Reporting Level

CURRICULUM & INSTRUCTION

Open Enrollment - Charter - Brevard

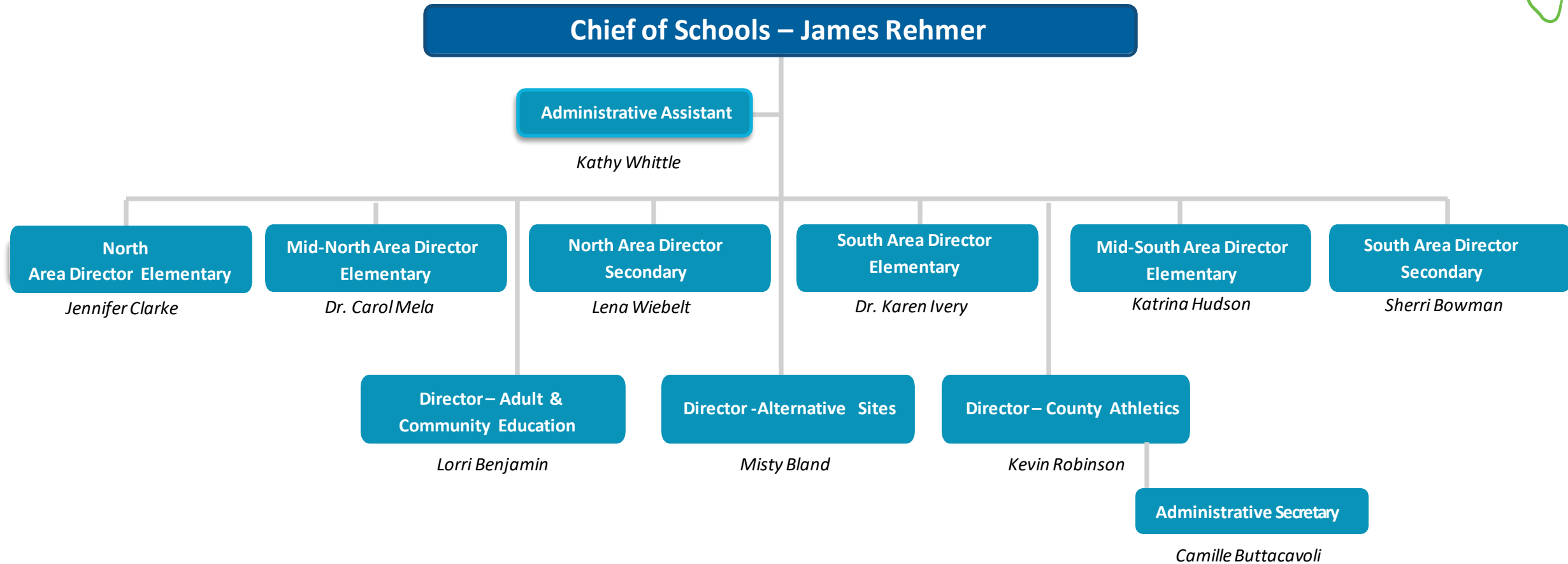
After School 9210/9219



- Direct Level or Higher
- Direct Reporting Level
- Second Reporting Level

CHIEF OF SCHOOLS

(9203)



- Direct Level or Higher
- Direct Reporting Level
- Second Reporting Level

CHIEF OF SCHOOLS (9203)



**Jennifer Clarke – Director
North Area Elementary Schools**

**Elaine Lindo
Administrative Secretary**

14 North Area Elementary Schools

Apollo Elem.

Coquina Elem.

Mims Elem.

Atlantis Elem.

Enterprise Elem.

Oak Park Elem.

Audubon Elem.

Fairglen Elem.

Pinewood Elem.

Cape View Elem.

Imperial Estates Elem.

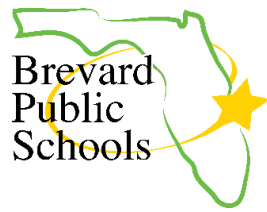
South Lake Elem.

Challenger 7 Elem.

Lewis Carroll Elem.

- Direct Level or Higher
- Direct Reporting Level
- Second Reporting Level

CHIEF OF SCHOOLS (9203)



**Dr. Carol Mela – Director
Mid-North Area Elementary Schools**

**Elaine Lindo
Administrative Secretary**

14 Mid-North Area Elementary Schools

Andersen Elem.

Manatee Elem.

Stevenson Elem.

Cambridge Elem.

MILA Elem.

Tropical Elem.

Endeavour Elem.

Quest Elem.

Viera Elem.

Freedom 7 Elem.

Roosevelt Elem.

Williams Elem.

Golfview Elem.

Saturn Elem.

- Direct Level or Higher
- Direct Reporting Level
- Second Reporting Level

CHIEF OF SCHOOLS

(9203)



**Lena Wiebelt – Director
North Area Secondary Schools**

**Elaine Lindo
Administrative Secretary**

15 North Area Secondary Schools

Astronaut HS

Jefferson MS

Mid-County MS

Cocoa HS

Kennedy MS

Rockledge HS

Cocoa Beach Jr/Sr HS

Madison MS

Space Coast Jr/Sr HS

Edgewood Jr/Sr HS

McNair Magnet MS

Titusville HS

Jackson MS

Merritt Island HS

Viera HS

- Direct Level or Higher
- Direct Reporting Level
- Second Reporting Level

CHIEF OF SCHOOLS

(9203)



**Katrina Hudson – Director
South Area Elementary Schools**

**Niki Jimenez
Administrative Secretary**

14 South Area Elementary Schools

Columbia Elem.

Discovery Elem.

Jupiter Elem.

Lockmar Elem.

McAuliffe Elem.

Meadowlane Int. Elem.

Meadowlane Prim. Elem.

Palm Bay Elem.

Port Malabar Elem.

Riviera Elem.

Sunrise Elem.

Turner Elem.

University Park Elem.

Westside Elem.

- Direct Level or Higher
- Direct Reporting Level
- Second Reporting Level

CHIEF OF SCHOOLS

(9203)



**Dr. Karen Ivery – Director
Mid-South Area Elementary Schools**

**Niki Jimenez
Administrative Secretary**

15 Mid-South Area Elementary Schools

Croton Elem.

Dr. W.J. Creel Elem.

Gemini Elem.

Harbor City Elem.

Holland Elem.

Indialantic Elem.

Longleaf Elem.

Ocean Breeze Elem.

Roy Allen Elem.

Sabal Elem.

Sea Park Elem.

Sherwood Elem.

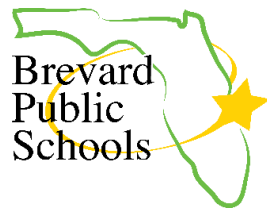
Suntree Elem.

Surfside Elem.

West Melbourne Elem

- Direct Level or Higher
- Direct Reporting Level
- Second Reporting Level

CHIEF OF SCHOOLS (9203)



**Sherri Bowman – Director
South Area Secondary Schools**

**Niki Jimenez
Administrative Secretary**

14 South Area Secondary Schools

Bayside HS

Brevard Virtual

Central MS

DeLaura MS

Eau Gallie HS

Heritage HS

Hoover MS

Johnson MS

Melbourne HS

Palm Bay HS

Satellite HS

Southwest MS

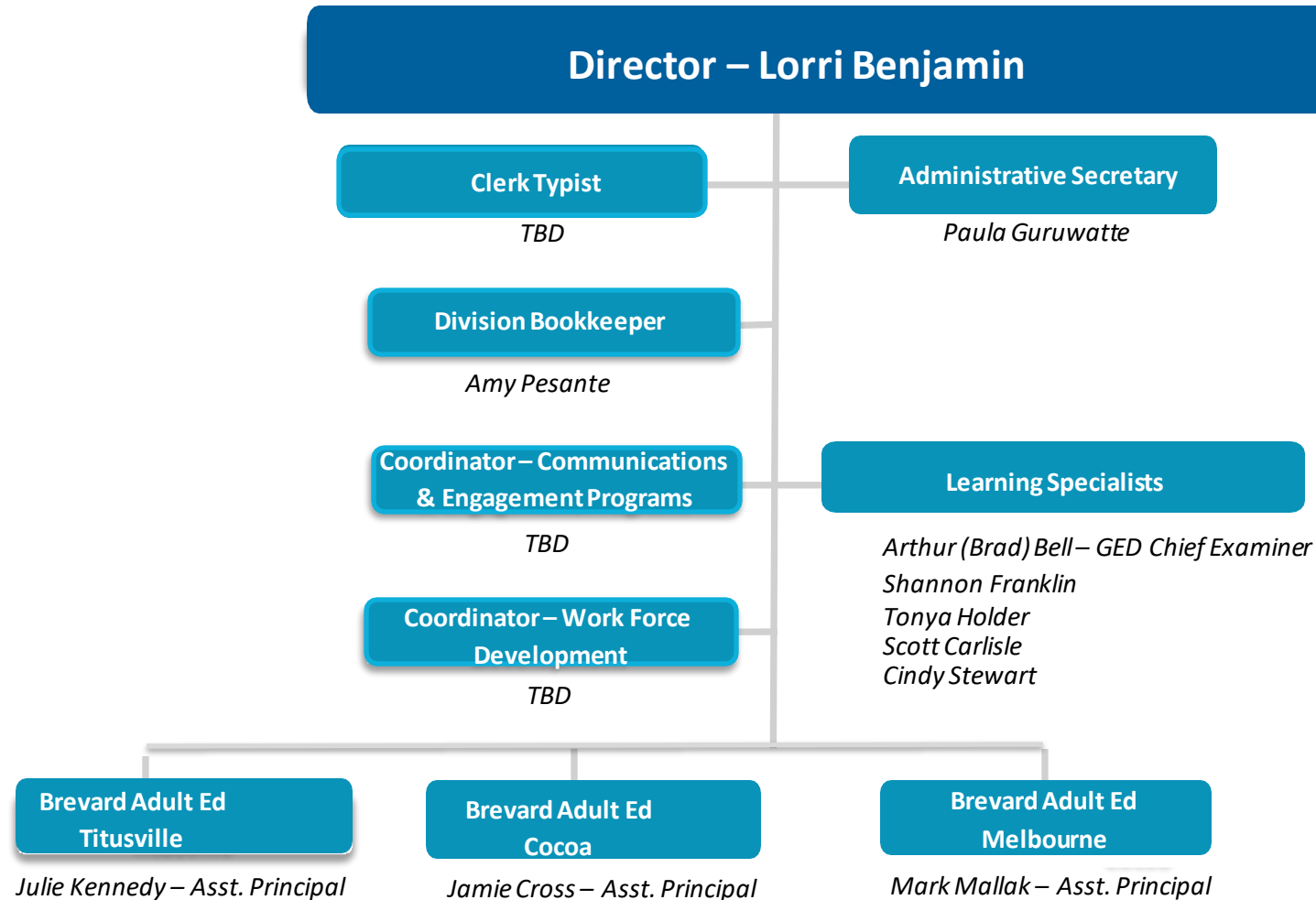
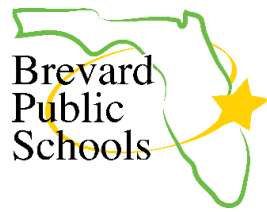
Stone MS

West Shore Jr/Sr HS

- Direct Level or Higher
- Direct Reporting Level
- Second Reporting Level

CHIEF OF SCHOOLS

Adult & Community Education (9240)



- Direct Level or Higher
- Direct Reporting Level
- Second Reporting Level

CHIEF OF SCHOOLS

Alternative Site

Programs (0089/1014/1017/1018/1025/1027/1028/9297)

Director – Mary "Misty" Bland

Social Worker
Delaina Cochran

Administrative Secretary

Vikki Dean

ESE Specialist
Michael Folger

Gardendale Separate
Day School

Assistant Principal
(12 Months)

Danielle Poley

Assistant Principal
(10 Months)

Julie Reda

Alternative Learning
Centers

North/Central ALC
Assistant Principal

Rebecca Tagye

South ALC
Assistant Principal

Shannon Sejeck

Other BPS Sites

Devereux

Melbourne
Center for
Personal Growth
(AMI Kids)

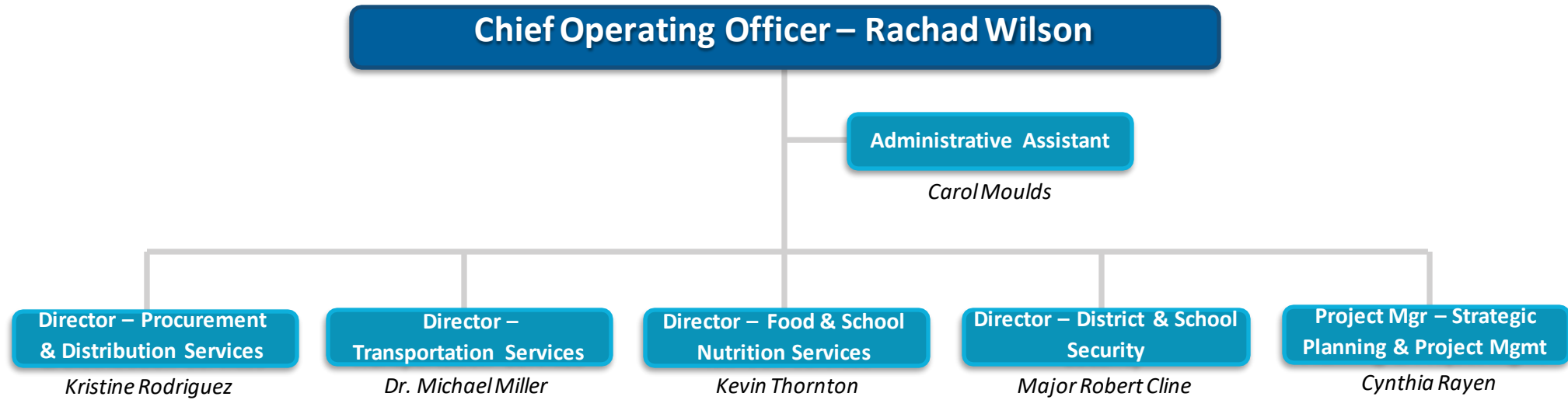
Jail / DJJ /
Detention
Center



- Direct Level or Higher
- Direct Reporting Level
- Second Reporting Level

DISTRICT OPERATIONS

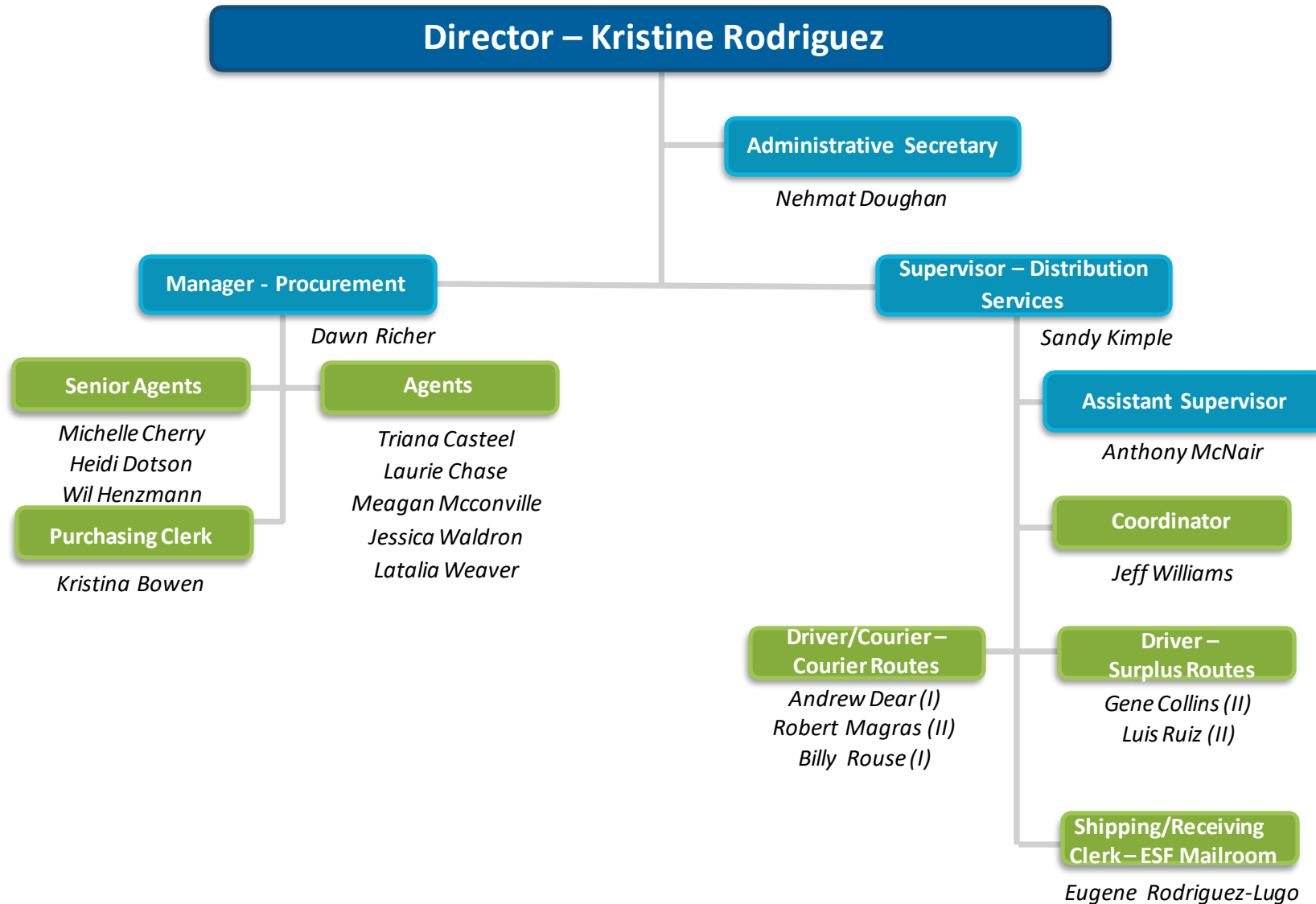
(9600)



- Direct Level or Higher
- Direct Reporting Level
- Second Reporting Level

DISTRICT OPERATIONS

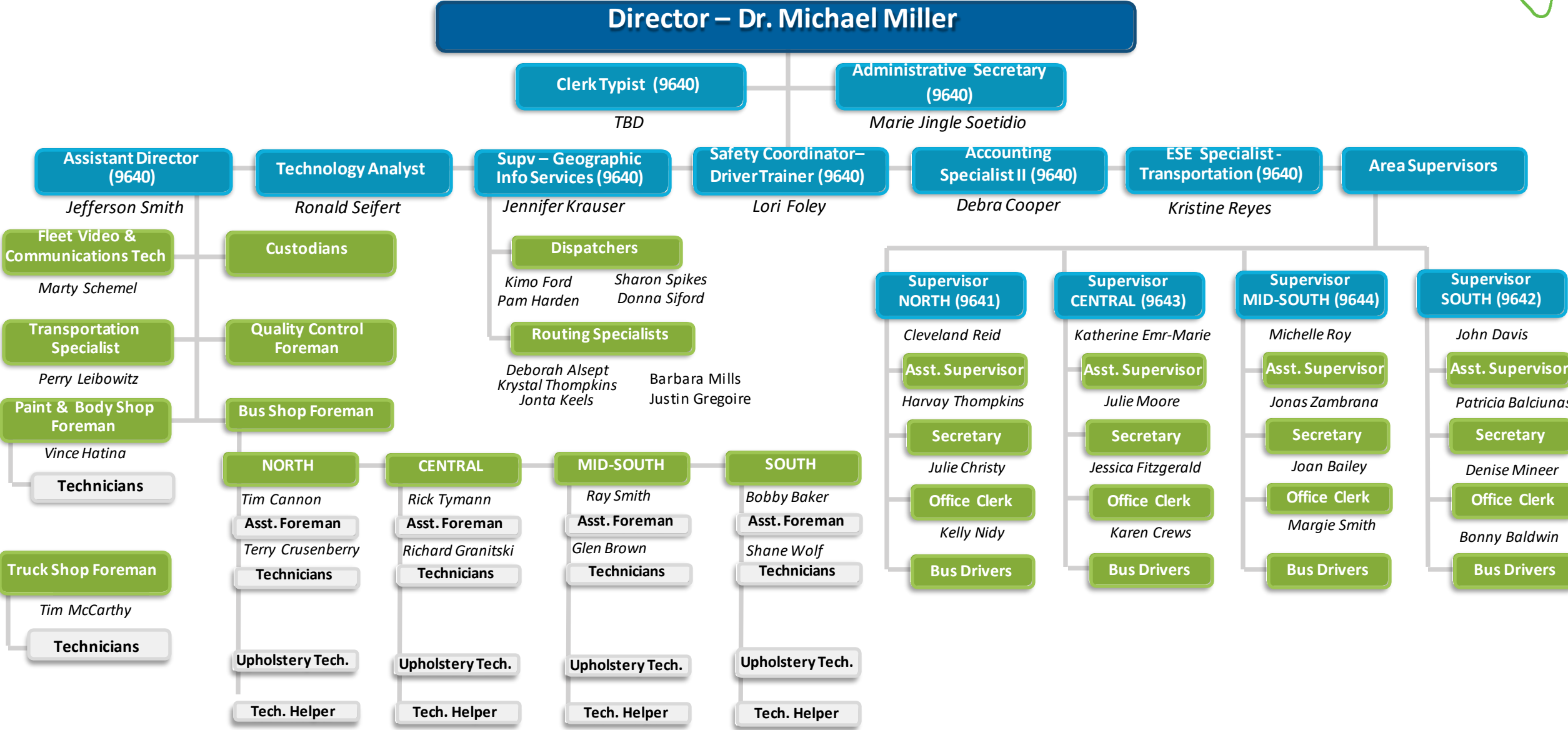
Procurement & Distribution Services (9680)



- Direct Level or Higher
- Direct Reporting Level
- Second Reporting Level

DISTRICT OPERATIONS

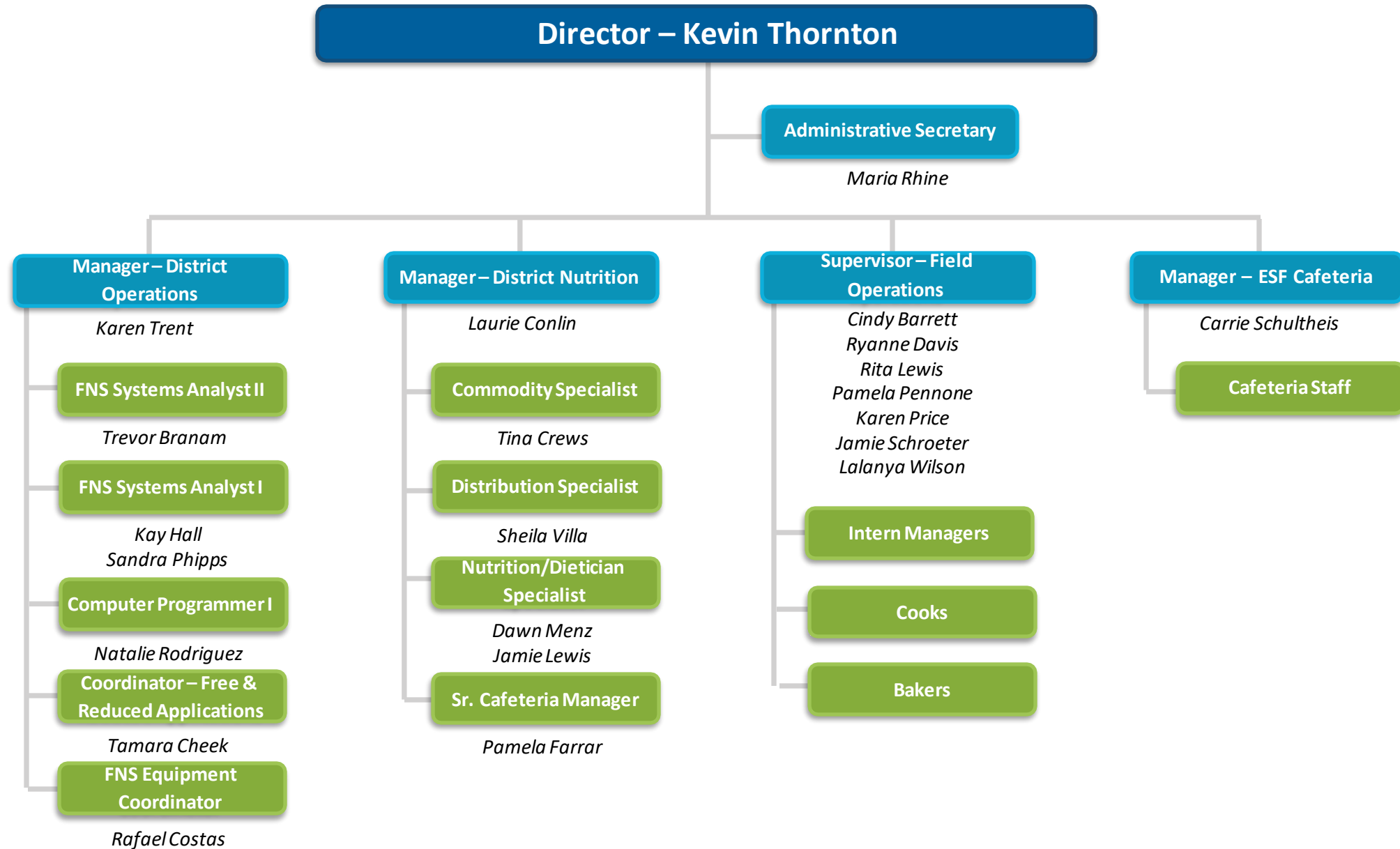
Transportation Services (9640-44)



- Direct Level or Higher
- Direct Reporting Level
- Second Reporting Level

DISTRICT OPERATIONS

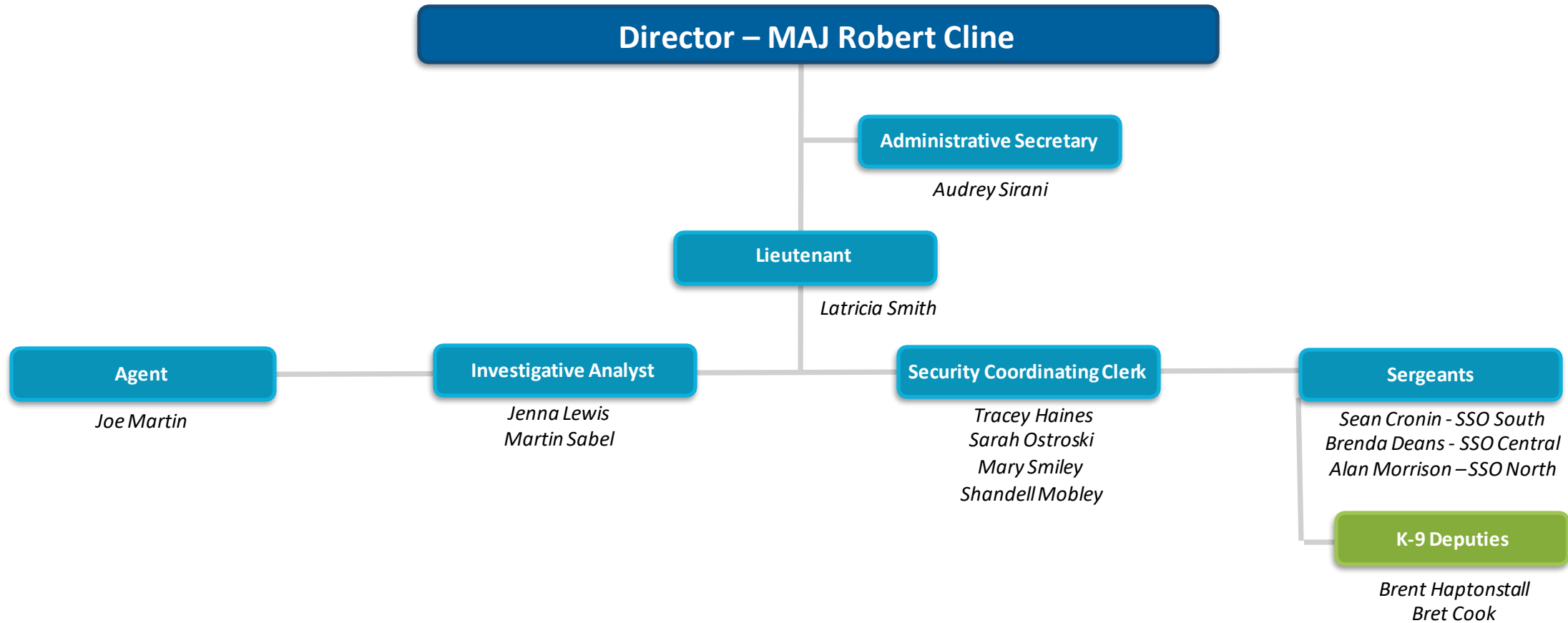
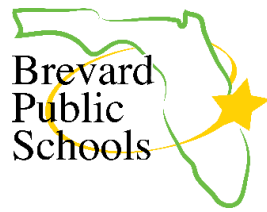
Food & Nutrition Services (9660)



- Direct Level or Higher
- Direct Reporting Level
- Second Reporting Level

DISTRICT OPERATIONS

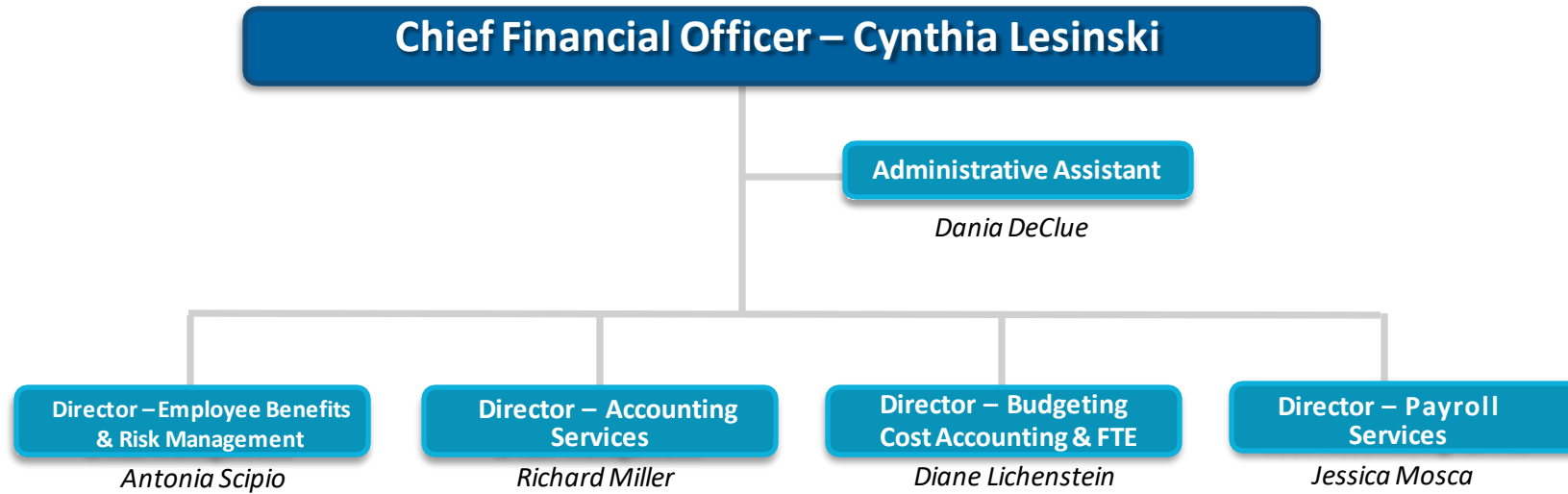
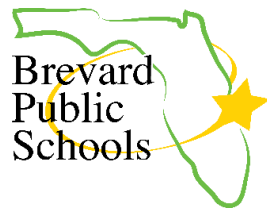
District & School Security (9670)



- Direct Level or Higher
- Direct Reporting Level
- Second Reporting Level

FINANCIAL SERVICES

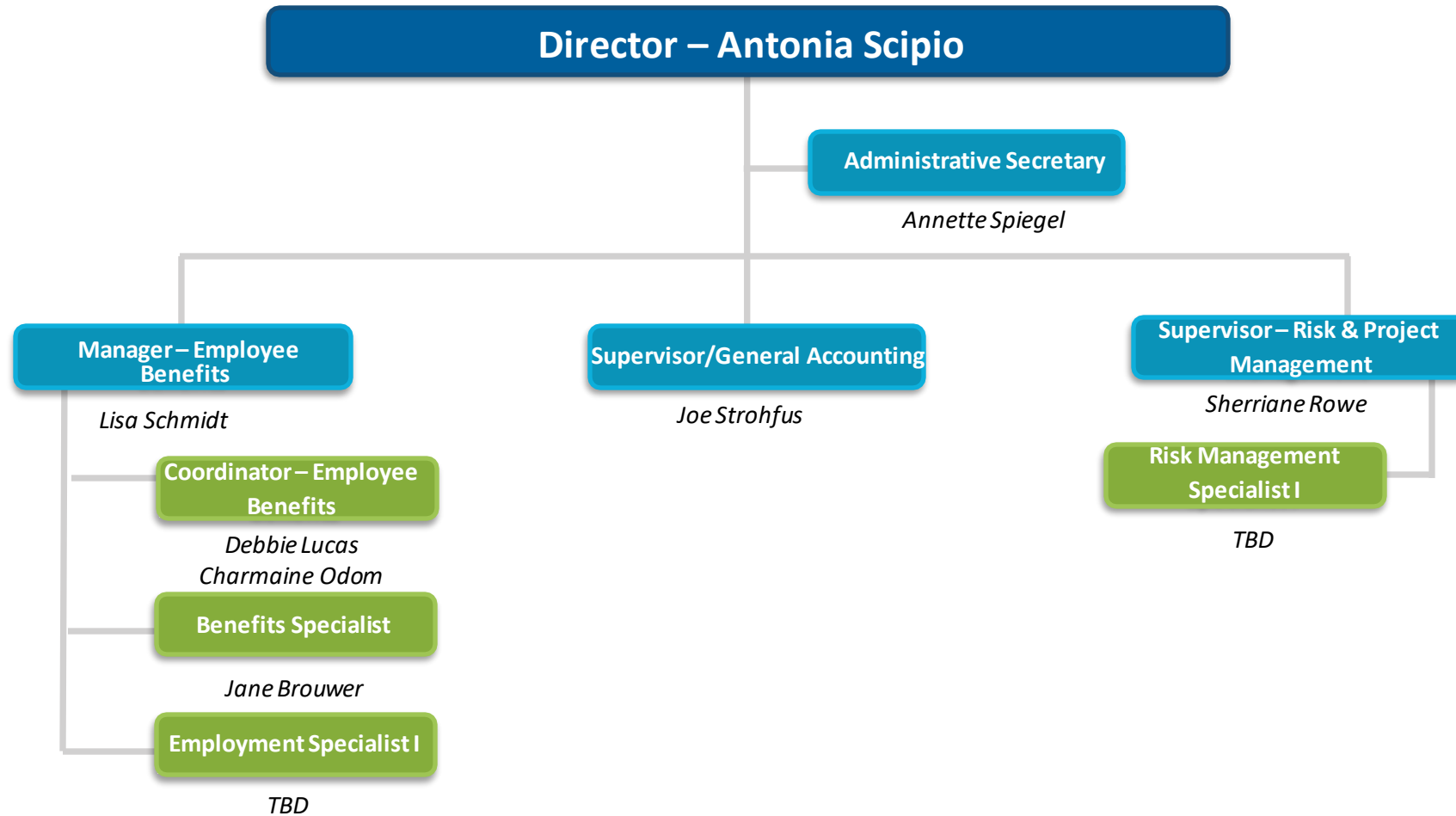
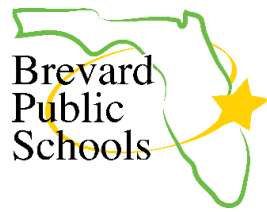
(9300)



- Direct Level or Higher
- Direct Reporting Level
- Second Reporting Level

FINANCIAL SERVICES

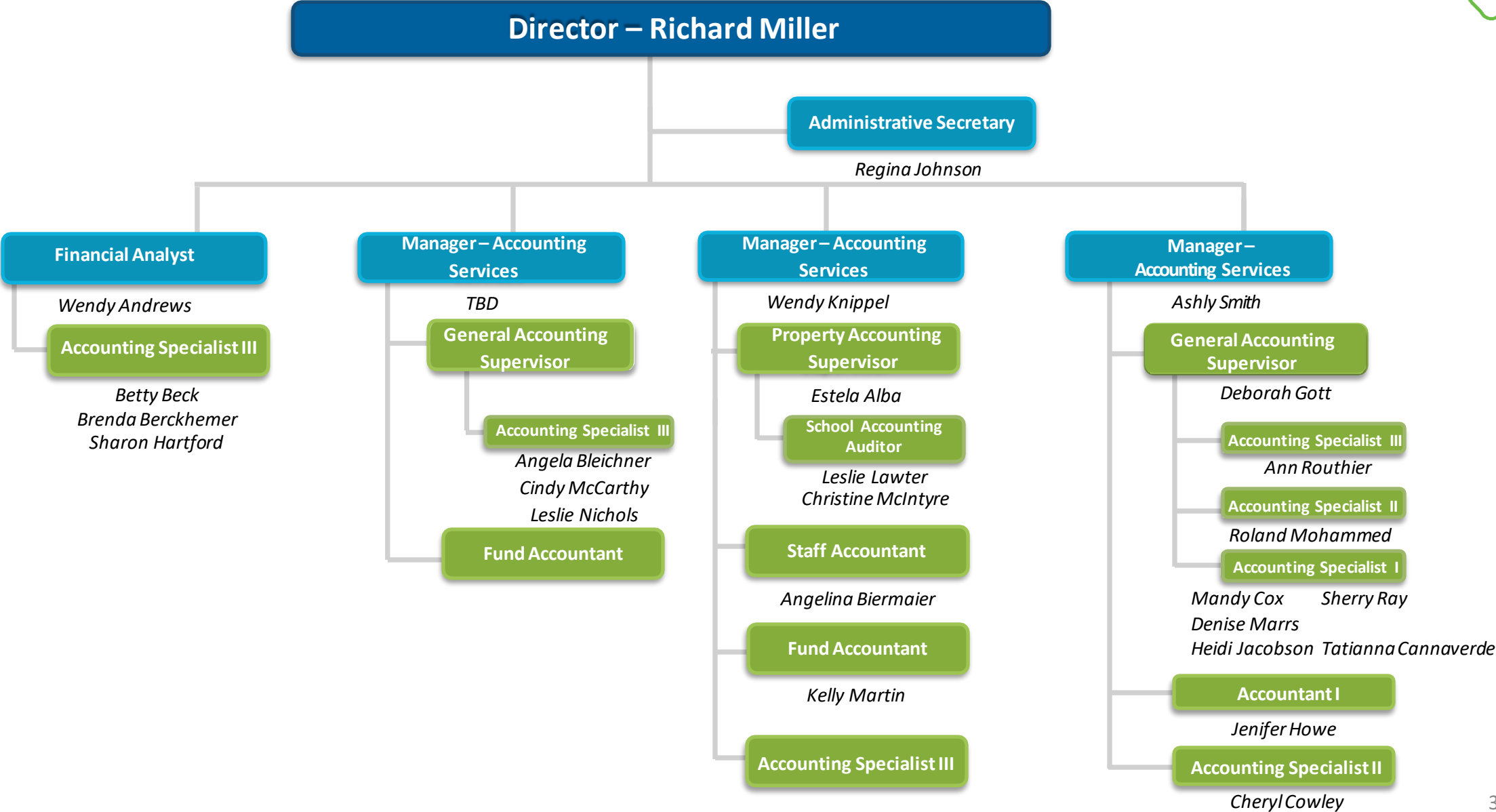
Employee Benefits & Risk Management (9470/9850/9855)



- Direct Level or Higher
- Direct Reporting Level
- Second Reporting Level

FINANCIAL SERVICES

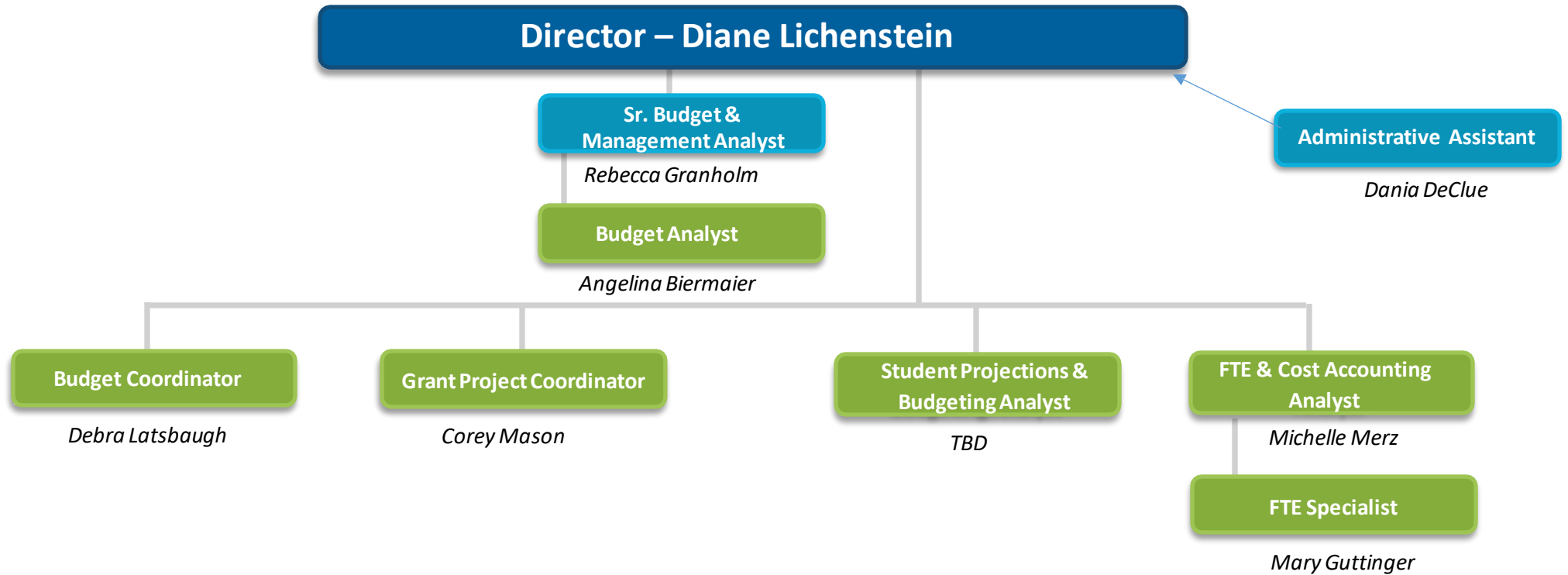
Accounting Services (9310)



- Direct Level or Higher
- Direct Reporting Level
- Second Reporting Level

FINANCIAL SERVICES

Budgeting, Cost Accounting & FTE (9330)

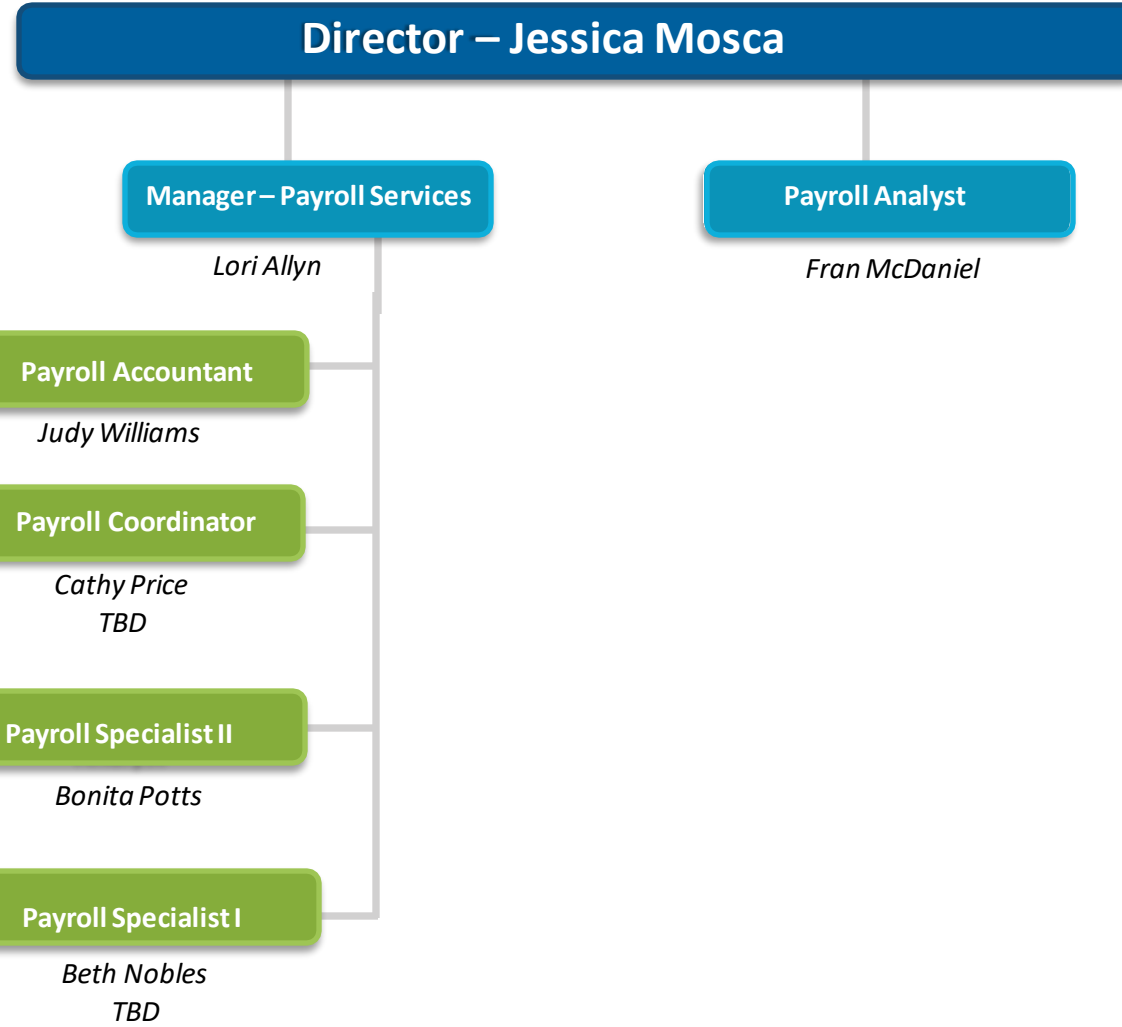


- Direct Level or Higher
- Direct Reporting Level
- Second Reporting Level

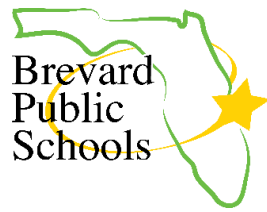


FINANCIAL SERVICES

Payroll Services
(9310)

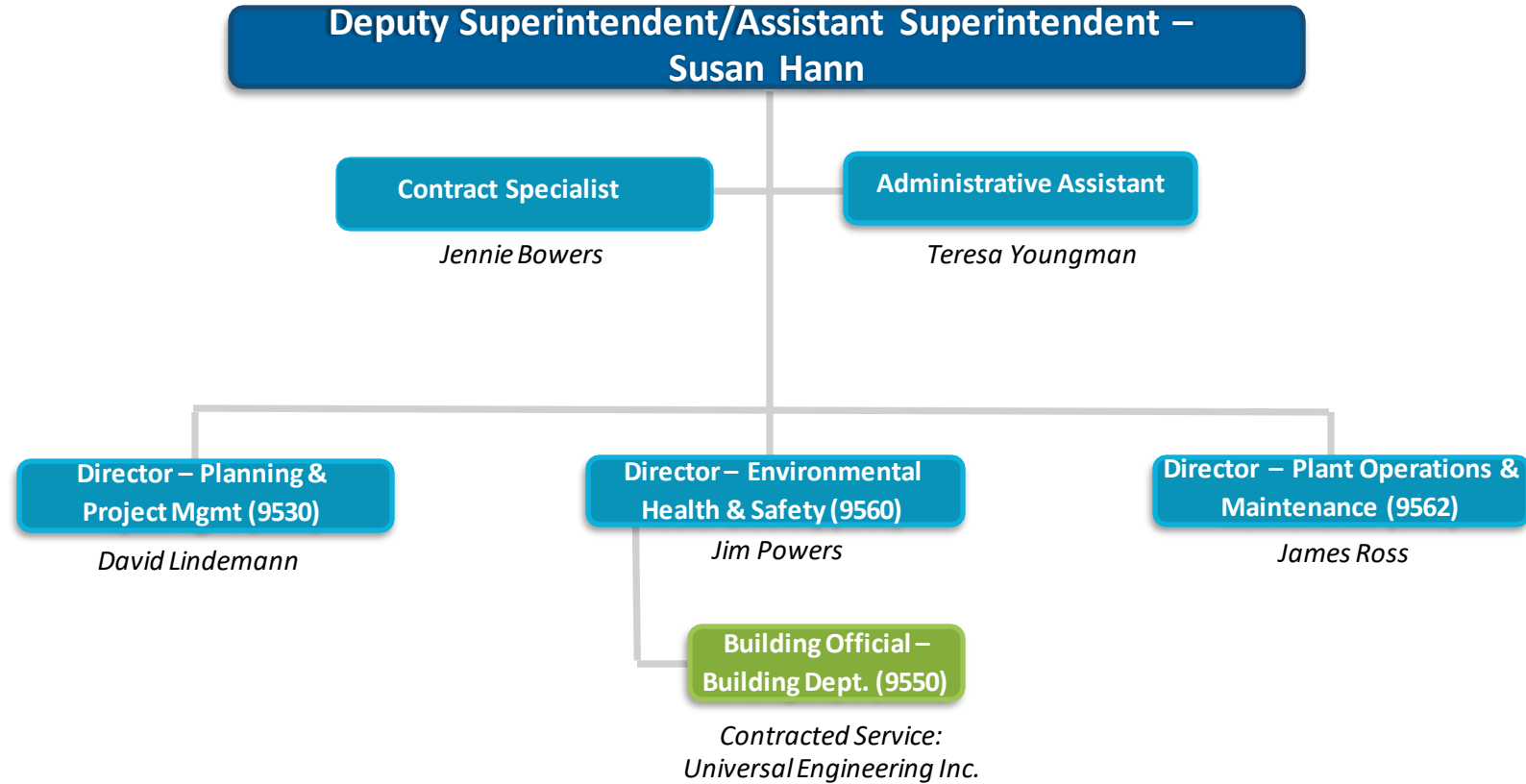


- Direct Level or Higher
- Direct Reporting Level
- Second Reporting Level



FACILITIES SERVICES

(9500)



- Direct Level or Higher
- Direct Reporting Level
- Second Reporting Level



FACILITIES SERVICES

Planning & Project Management

(9530)

Director – David Lindemann

Project Admin Specialist II

TBD
TBD

Facilities Fund Accountant

Loleen Shaw
Rayna Dibling

Project Manager

David Martin

Project Field
Coordinator

Kermit Evetts

Project Manager

Camille Gordon-Taylor

Project Field
Coordinator

TBD

Manager – Planning &
Intergovt. Relations

Karen Black

Planning & Design
Technician

Robert Stinson

Construction Manager

Tim Brown

Project Field
Coordinator

Odell Jones
TBD

Facility Maintenance
Technician

Edward Breznai
Jon Rittenhouse
Philip Rose
Mark Thomure

Construction Manager

TBD

Construction Manager

Chris Gerber

Project Field
Coordinator

Binkle Brisson

Construction Manager

Chris Payne

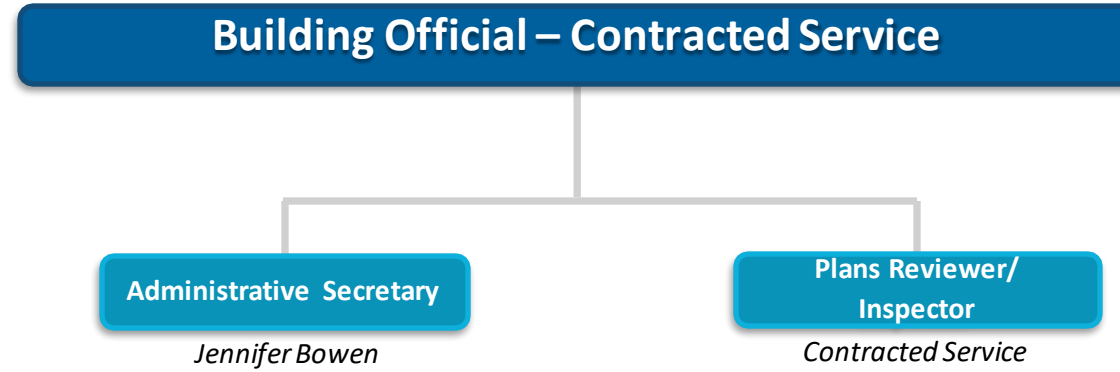
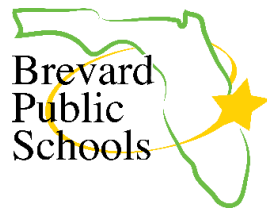
Project Field
Coordinator

Jennifer Wells

- Direct Level or Higher
- Direct Reporting Level
- Second Reporting Level

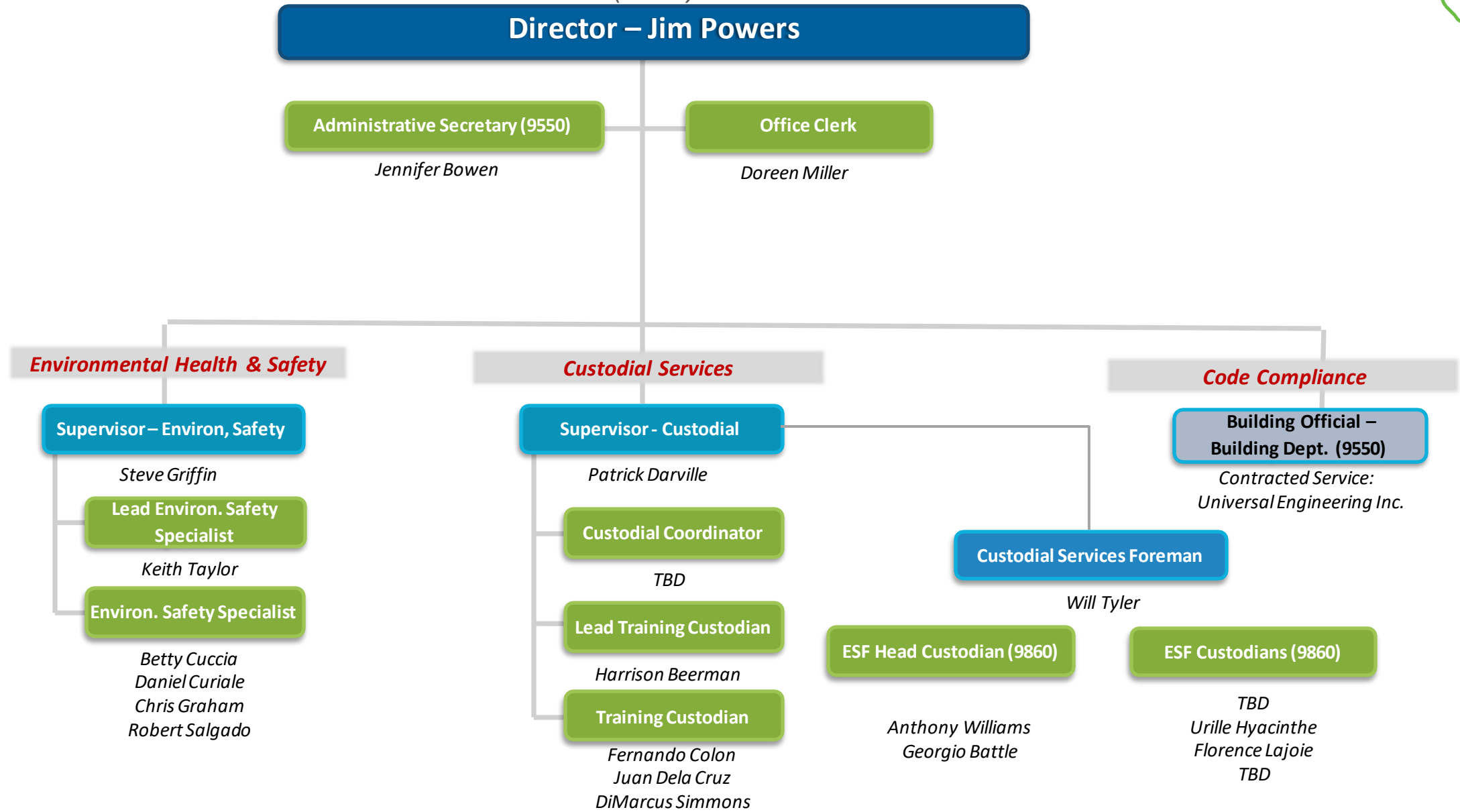
FACILITIES SERVICES

Building Department (9550)



FACILITIES SERVICES

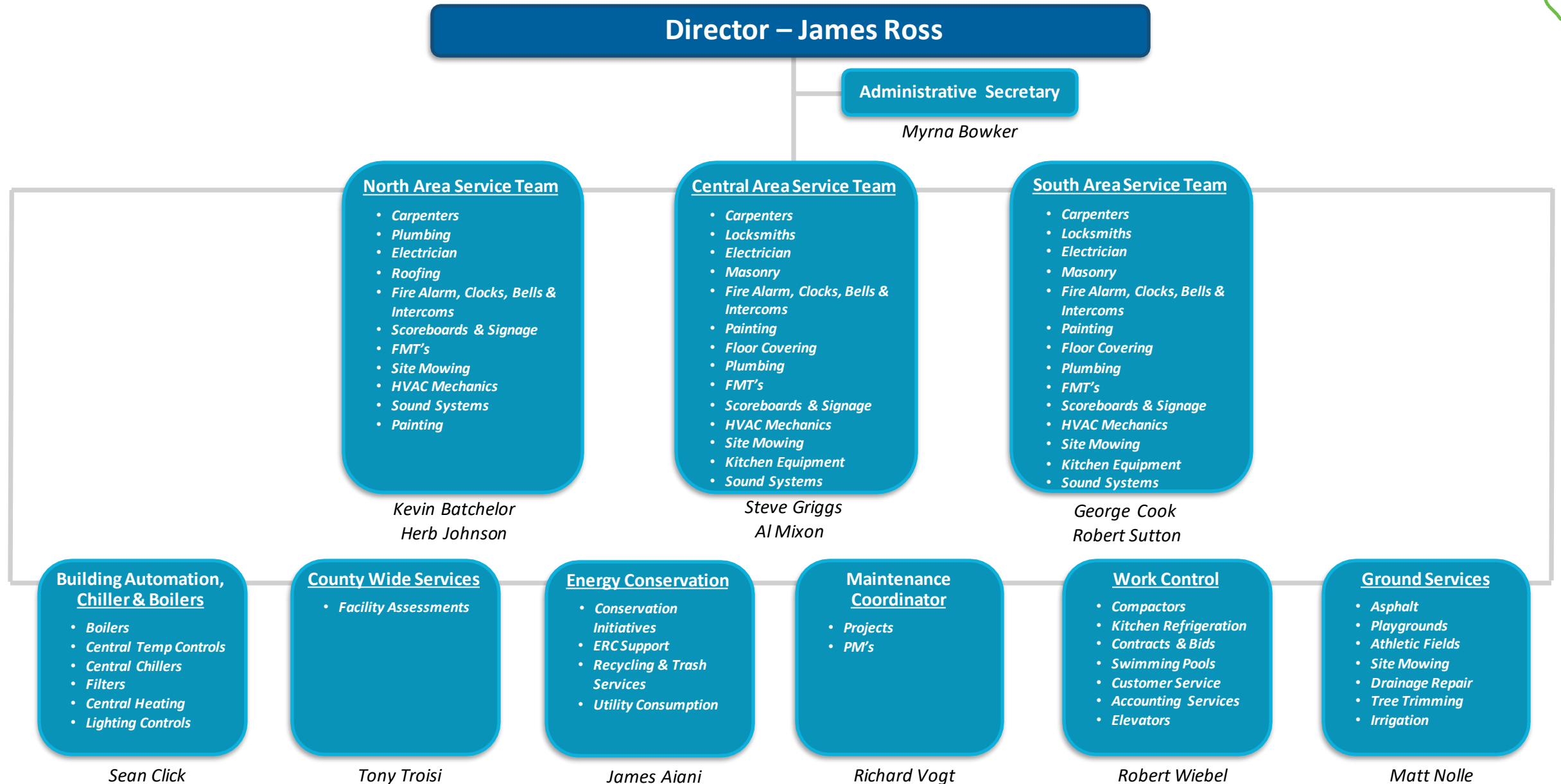
Environmental Health & Safety/Central Custodial Services
(9560)



- Direct Level or Higher
- Direct Reporting Level
- Second Reporting Level

FACILITIES SERVICES

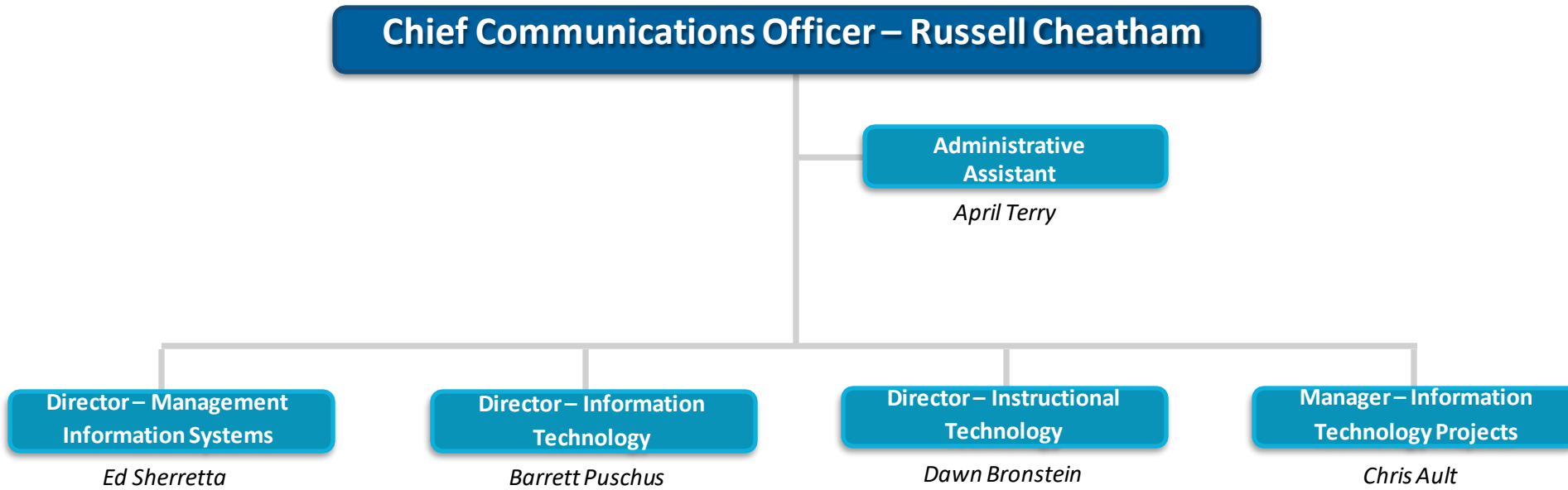
Plant Operations & Maintenance (9562)



- Direct Level or Higher
- Direct Reporting Level
- Second Reporting Level

EDUCATIONAL TECHNOLOGY

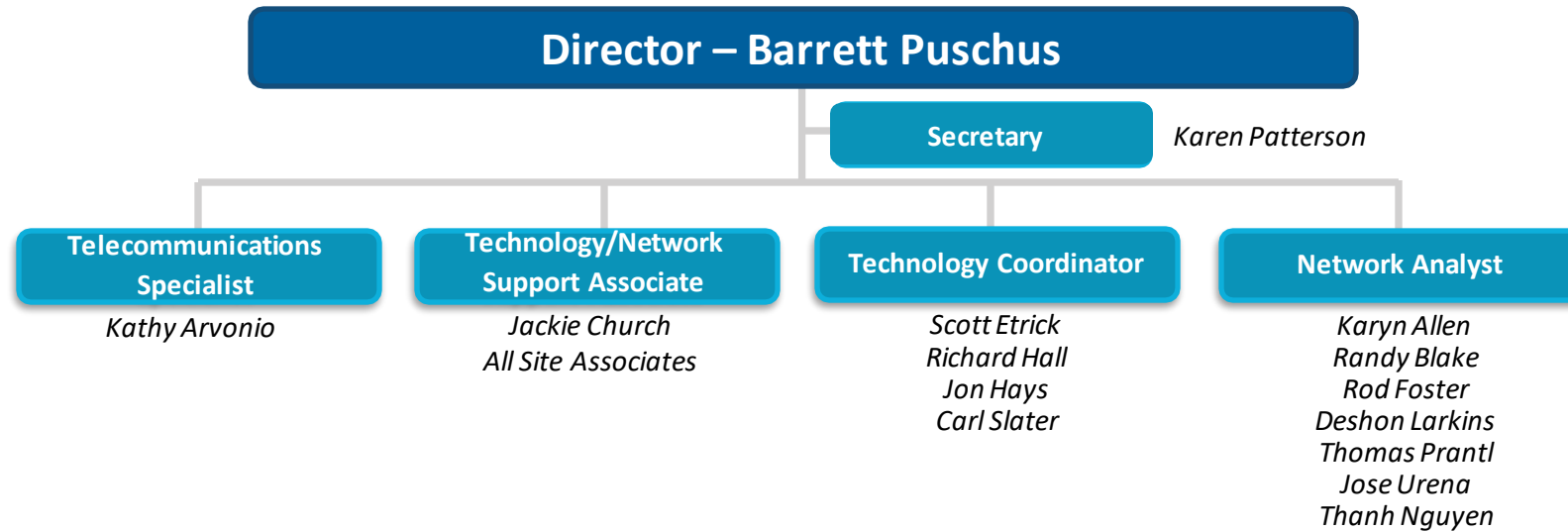
(9720/9721/9722/9723/9811)



- Direct Level or Higher
- Direct Reporting Level
- Second Reporting Level

EDUCATIONAL TECHNOLOGY

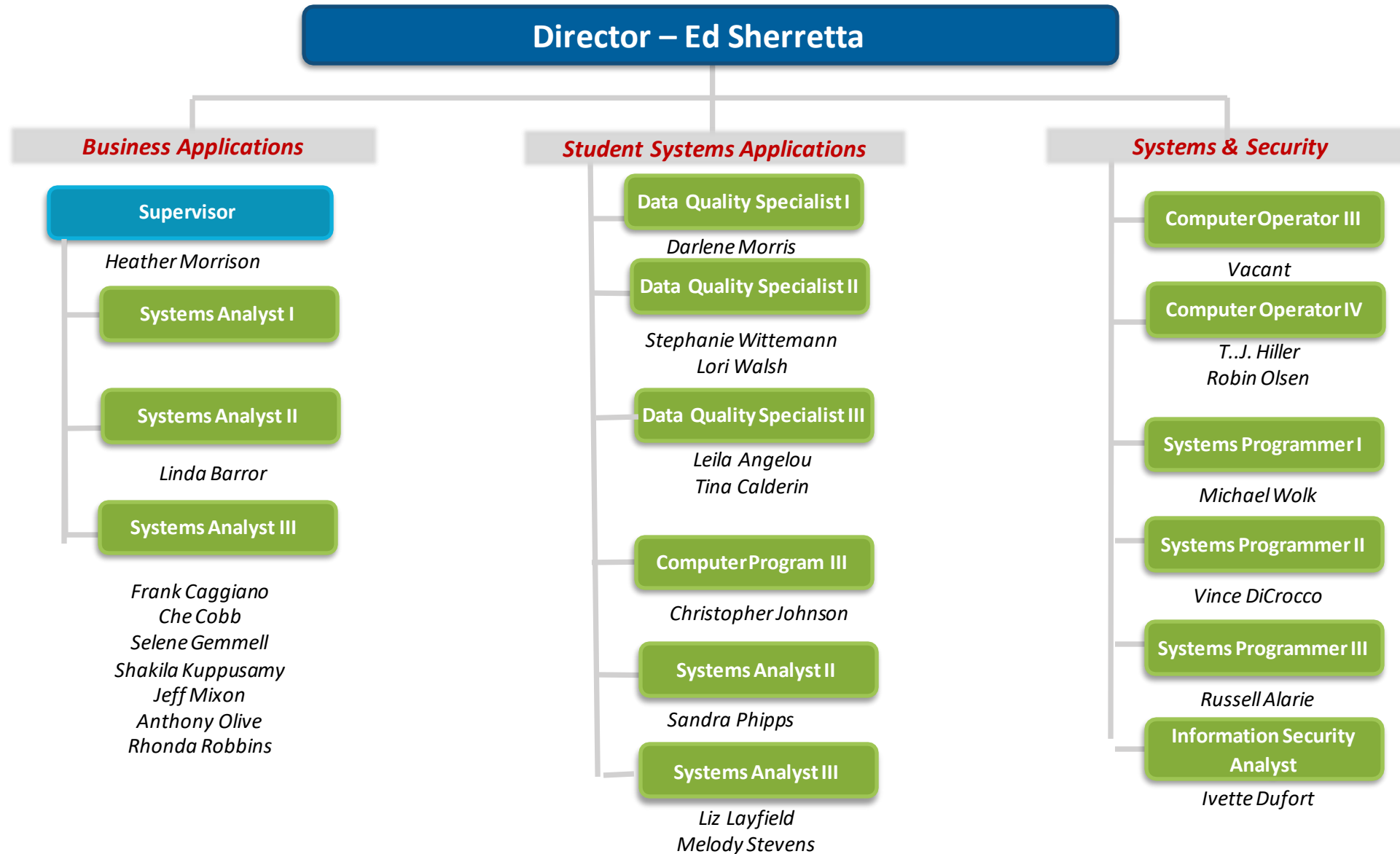
Information System Services (9721)



- Direct Level or Higher
- Direct Reporting Level
- Second Reporting Level

EDUCATIONAL TECHNOLOGY

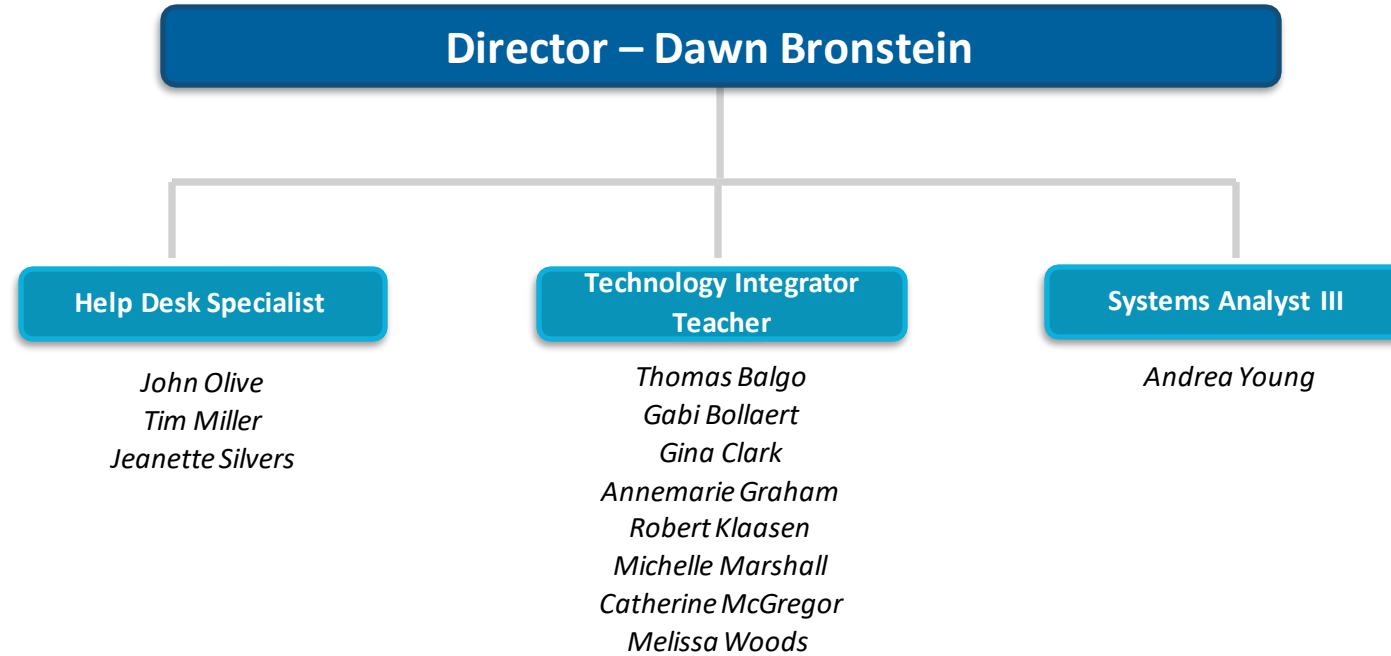
Management Information Systems (9722)



- Direct Level or Higher
- Direct Reporting Level
- Second Reporting Level

EDUCATIONAL TECHNOLOGY

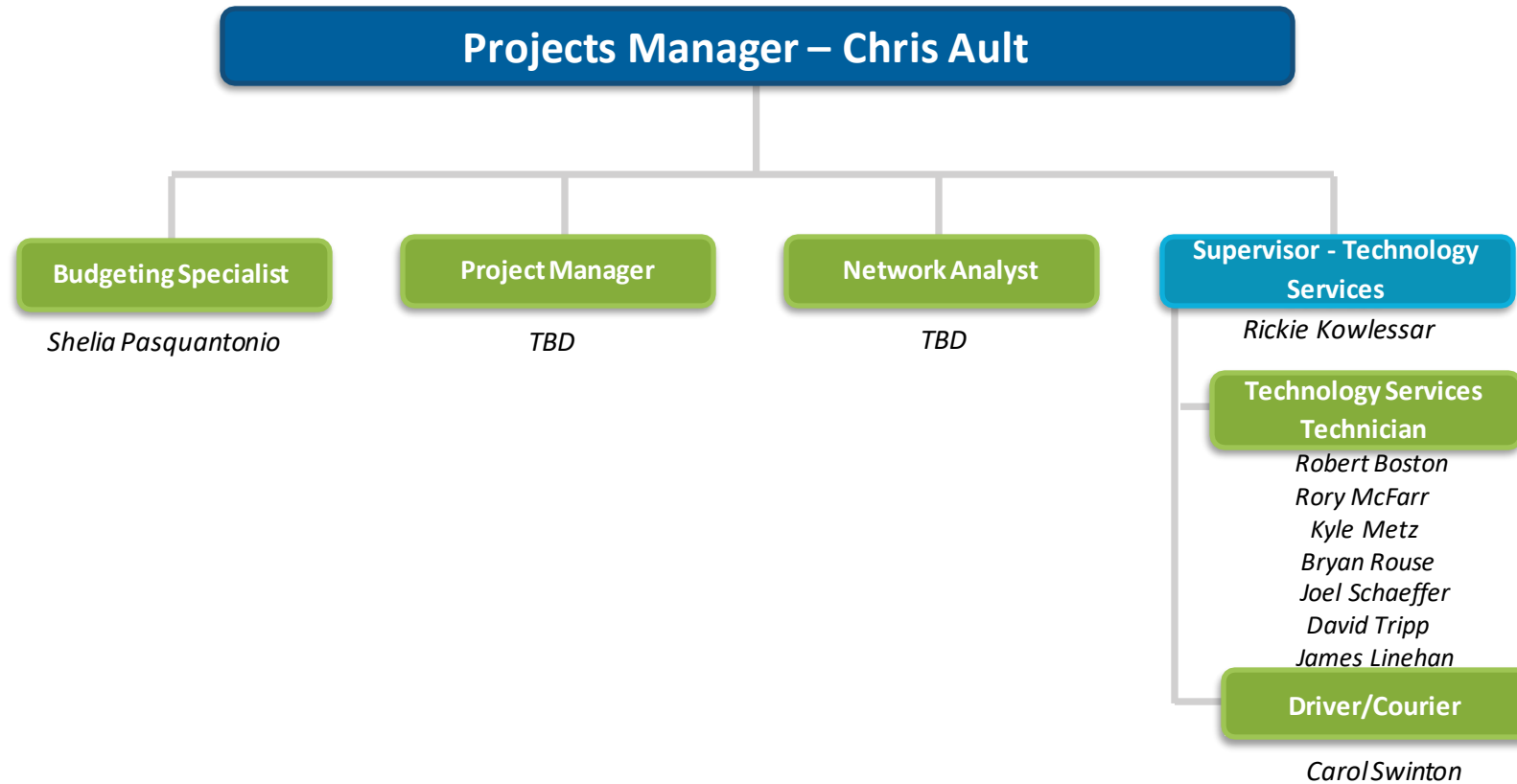
Instructional Technology (9811)



- Direct Level or Higher
- Direct Reporting Level
- Second Reporting Level

EDUCATIONAL TECHNOLOGY

Technology Support Services (9723)



- Direct Level or Higher
- Direct Reporting Level
- Second Reporting Level

GOVERNMENT & COMMUNITY RELATIONS

(Depts. 9122, 9123)

